

ITP Young Researchers' Session

Postdoctoral Researcher, R-GIRO
Tetsuo MIZUTA
28/Feb/2009

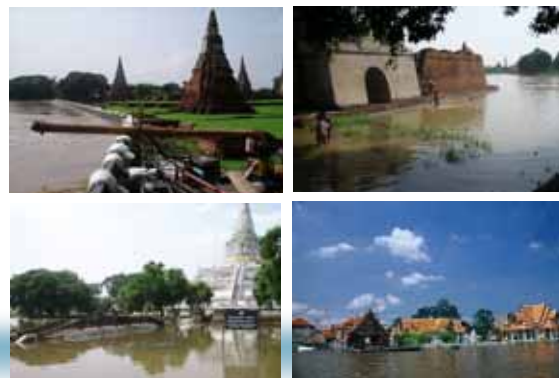
This presentation title:

"World Heritage Ayutthaya's flood loss estimation as risk management, and a practice of lectures as an achievement of research activities"

Contents of this presentation

1. Outline of field survey (main-subject)
Questionnaire survey and Interview at Ayutthaya
2. Introduction of lectures (sub-subject)
operated at APTU and CMU

Previous severe flood, 2006



Ayutthaya as the World Heritage

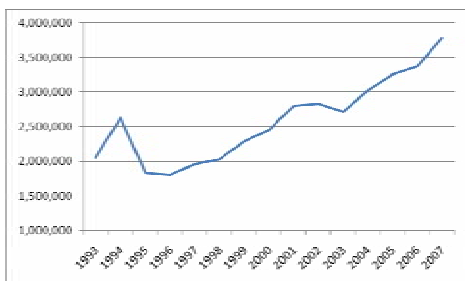


Fig 1: Number of tourists after World Heritage inscription in 1991 (person)

1-1 This survey's aim

- ◆ In Ayutthaya, floods often occurred in the past and present.
- ◆ As a risk manager, I want to know Ayutthaya's value and show adequate methods to prevent flood and mitigate loss.

1-2 Survey method

- ◆ 4 APTU students and I had a questionnaire survey and interview in 20th of September 2008.
- ◆ Targets are 25 Foreign tourists, 30 Thai domestic tourists, and 40 local residents and shopkeepers at "Wat Phra Sri Sanphet", famous Buddhism temple.

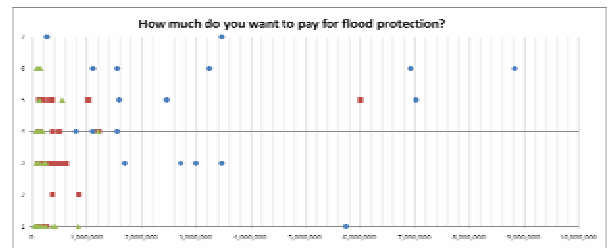


Fig.2: correlations between annual income and WTP
Blue circle means Foreign tourists, Red square means Thai domestic tourists and Green triangle means local residents.
On the vertical axis, #1 means "do not pay anything/anymore", #2 means "less than 5 Bahts", #3 means 6-10 Bahts, #4 means 11-20 Bahts, #5 means 21-50 Bahts, #6 means 51-100 Bahts and #7 means "over 101 Bahts"

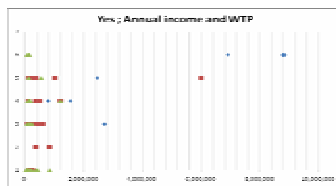


Fig.3 (above) shows recognition "Yes" and correlation with income and WTP.

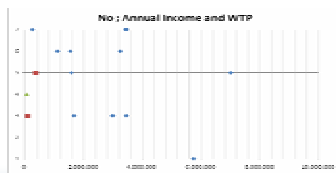


Fig.4 (below) shows recognition "No" and correlation with income and WTP.

Legends are same as Fig.2.

Results of survey

- ◆ For the person who don't know flood loss, their average WTP is 62.0 Bahts/person/visit, on the other hand, who knows it is 24.5 Bahts/person/visit.
- ◆ As a result, I found that each parameter has little correlation with each other. I cannot show other parameters' correlations such as nationality, religion and so on, but rough calculations also showed me the same situation.

3 lecture titles

- ◆ "An introduction of Japanese city/urban planning" in 8th of July at APTU
- ◆ "An introduction of Japanese Disaster Prevention Plan" in 15th of July at APTU
- ◆ "Disaster Prevention and Mitigation Plan and Practice in Japan" in 4th of September at CMU

This 3 months precious stay in Thailand is sponsored by The Japan Society for the Promotion of Science (JSPS). I deeply thank to JSPS, Ritsumeikan University and Thammasat University.

Tetsuo MIZUTA
tmizuta@fc.ritsumei.ac.jp