

Ukiyo-e Database for Researching Japanese Culture: An Example of Its Usage

Ryoko Matsuba
(Postdoctoral Fellow, Kinugasa Research organization)

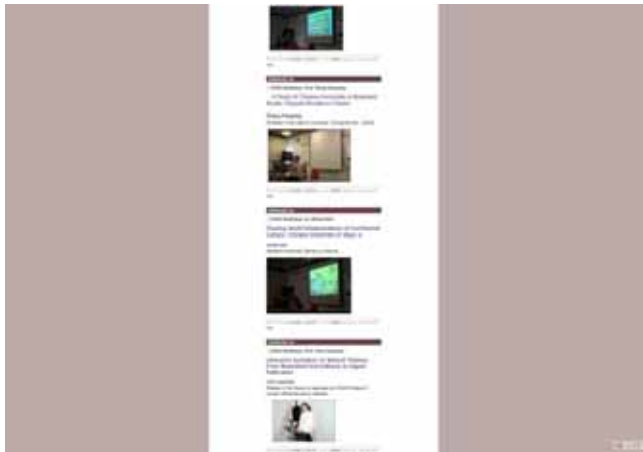
Thursday, February 11, 2010
Rits-DMUCH Conference Hall, Kinugasa Campus, Ritsumeikan University

The Impact of Image Culture : Using Digital Archives for Research in Japanese Art

イメージ文化の利用と受容
- 日本美術研究におけるデジタルアーカイブの活用をめぐって -



Friday 4 September 2009 from 10 am – 5 pm
Brunel Gallery B202, SOAS, University of London



http://www.arc.ritsumeikai.ac.jp/lib/GCOE/JCSG/john_carpenter/soas-workshop/

The Conclusion at the Workshop

- In terms of interpreting image culture, we need to compare as many visual images as possible.
- We should improve public accessibility of ukiyo-e databases.
- Image databases can accumulate an enormous amount of information, with which humanities researchers can compare numerous examples.

The acting patterns: Stopping a fight



Databases for Humanities Researchers

- Researcher to pursue individual methods of classification, and to select examples from a vast amount of data.
- Databases can be used to amass and review information and thereby to allow comparison of a great amount of research materials.

Search: All records



User-memo function:



User-memo function: Individual Database



The Museum System

Choose to view records in a variety of display modes, including Lightbox, below.



- **Label Copy:** Summary information for a single record, following the model of an exhibition label
- **Lightbox:** Thumbnail images for up to 12 records
- **List:** Summaries of record information in a spread-sheet format. List content can be customized using the List View Designer.
- **List with Images:** Brief summaries and thumbnail images for up to 8 records
- **Data Entry Screen:** Complete display of all record information, used for adding or entering data
- **Hierarchy Display:** Label Copy display, with a "tree" view of all records linked to a specific record



Honolulu Academy of Arts



TMS: Interface for collection database

Conclusion

- "Viewability" plays a role in image databases as they accumulate vast amounts of information for humanities researchers to compare a large number of images.
- Construction of a database by humanities researchers themselves helps them find distinctive features and pictorial patterns of ukiyo-e, leading to new perspectives on Japanese culture.

This database system creates a bridge between Japanese and foreign researchers.