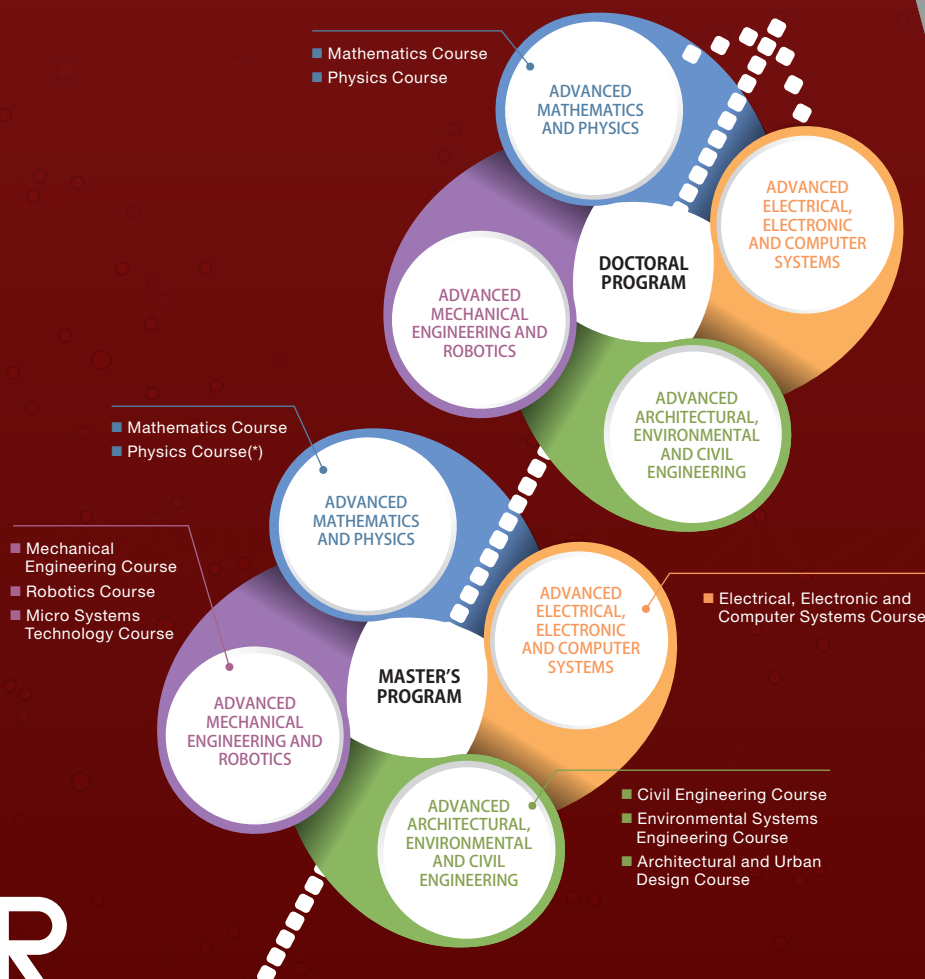


# Graduate School of Science and Engineering

## Specialized Research Opportunities to Meet Your Goals

Craft your own research path under supervision in a specific field to meet your practical goals.

- All courses and research supervision in English
- 9 research specializations at the Master's level and 5 at the Doctoral level give you the opportunity to receive focused supervision in your particular field of interest
- 4 degrees available: Master of Science, Master of Engineering, Doctor of Science, and Doctor of Engineering
- Practical results-oriented research to prepare you to excel in a leading field of technology
- Multinational faculties and students
- Learn how to describe your research effectively to technical experts, industrial specialists, and government representatives
- Learn how to make use of acquired experience and skills to regional development



\*At the Master's level, the Physics Course is available in Japanese only.

# STUDENT VOICE

*Why study at Ritsumeikan?  
See what our students have to say!*

DATA

**ALANSARI ALANOUD ABDULAZIZ M**

■■■■■

Master's Program

Architecture and Urban Design Course



## **Q Tell us about your research theme.**

My principal research interests lie in the field of conservation, focusing on cultural heritage of Japanese contemporary houses in Kyoto city. I am currently investigating employment and improvement of traditional (material and design) elements in contemporary houses, using surveys and case study analysis.

## **Q How do you think your experience at Ritsumeikan will help you achieve your future goals?**

I think the university and the campus lifestyle provided me with a great experience in an environment with friends and teachers of different nationalities that helped me improve my communication skills.

## **Q What is your favorite thing about Ritsumeikan University?**

The department of architecture welcomes many international architects from different countries, who have been great resources to help me improve my architectural background.

## **Q Tell us about a unique experience you had at Ritsumeikan.**

I was the first Saudi student in this campus, so other Saudi students who were interested in Ritsumeikan tried to contact me and ask for advice, and it felt great to help others and be useful. Also, during the most beautiful days of the spring, sakura flowers were falling all around campus, and it was a lovely and unique experience.



## **Q Why would you recommend studying at Ritsumeikan to another scholar?**

Studying at Ritsumeikan is a great experience. Students and professors are friendly and helpful, campus life is enjoyable, and the study materials are useful and varied in content. The University organizes recreational trips, summer camps, training courses, and lectures, which are useful in multiple fields.



**For More  
Information**

Please refer to the homepage for the latest information on scholarships, housing and other assistance.

**HP ▶▶▶ <http://www.ritsumei.ac.jp/gsse/eng/>**



**Graduate School of Science and Engineering  
Ritsumeikan University**

Biwako-Kusatsu Campus 1-1-1 Noji Higashi, Kusatsu, Shiga 525-8577, JAPAN  
Tel: +81-77-561-2624 Fax: +81-77-561-2890

**Futurize.**

きみの意志が、未来。