



ONLINE
COURSE

2022

PKU



CHINESE LANGUAGE SUMMER SCHOOL

北京大学汉语暑期学校招生简章





01

PROGRAM INTRODUCTION

Peking University Chinese Language Summer School was founded in the 1980s. It is committed to providing overseas students with a diversified platform to enter Peking University, learn Chinese, and understand China. With its long history of running the school, high-quality teaching system, and extensive and in-depth Chinese-foreign cultural exchange events and rich and varied field trips and hands-on activities, the Chinese Language Summer School has attracted the attention and favor of more and more international students. Every year, there are about 300 overseas students from more than 30 countries participating in the program.



02

PROGRAM DETAILS - ONLINE COURSE



Course Arrangement

Duration

Choice of 4-week, 6-week or 8-week programs

Class Mode

Online platform teaching [Live] + Exclusive course materials + Experienced teaching assistants (platform account and detailed download/use tutorials will be provided).

Daily Schedule

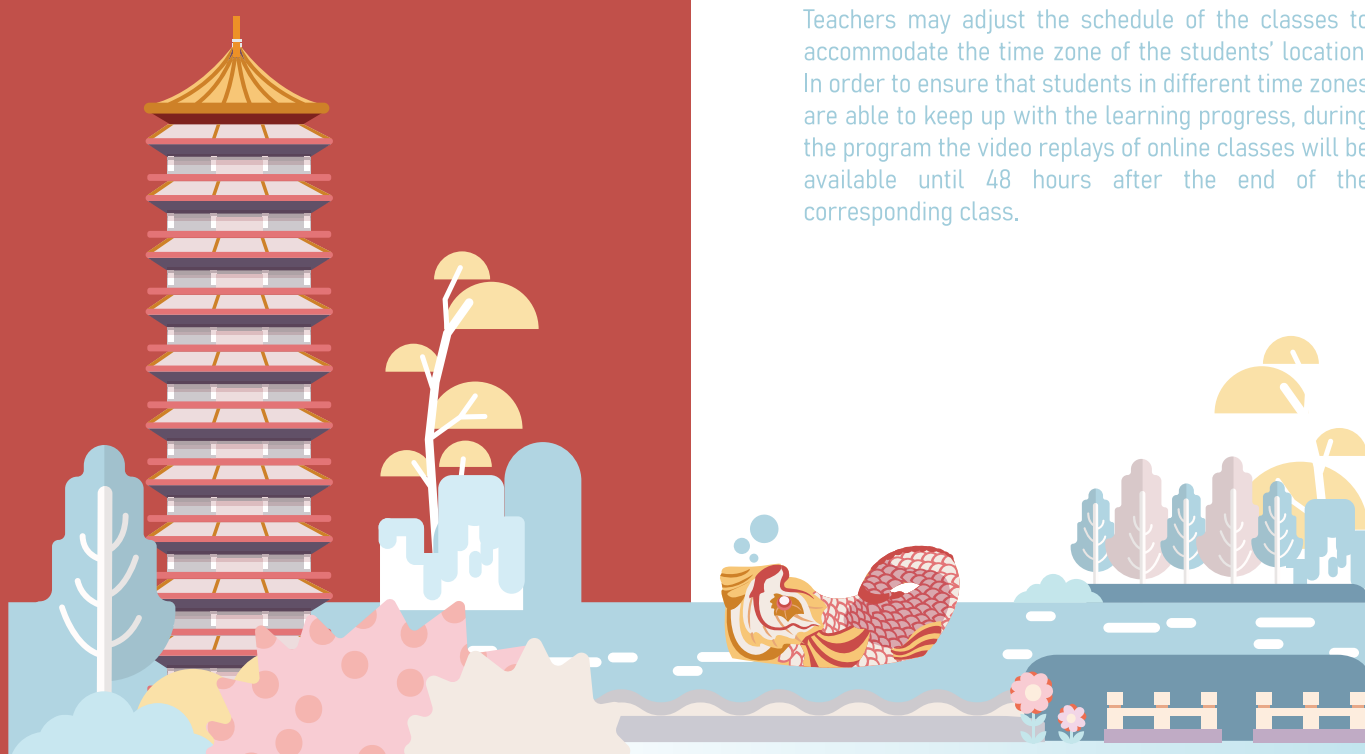
8:30-9:00, Monday to Friday (tentative): Small group discussion under the guide of course teaching assistants

9:00-11:00, Monday to Friday (tentative): Online course main curriculum taught by lead teacher

14:00-15:00, Tuesday and Thursday: course teaching assistants provide online tutoring

Friday afternoons: Lectures in English

Teachers may adjust the schedule of the classes to accommodate the time zone of the students' location. In order to ensure that students in different time zones are able to keep up with the learning progress, during the program the video replays of online classes will be available until 48 hours after the end of the corresponding class.





Introduction to the Courses

Comprehensive Chinese Course



- Focus on improving and enhancing students' reading, writing skills and oral communication proficiency.
- Learn common vocabulary, grammar, and sentence patterns of the Chinese language to enhance students' comprehensive skills and communicative ability in Chinese.

BASIC CLASS

Mainly for students with zero Chinese ability, or at the stage of learning Pinyin, common Chinese characters and simple Chinese words and sentences.

ELEMENTARY CLASS

For those who have vocabulary skill of more than 200 Chinese words. The class mainly teaches basic grammar and daily expressions.

INTERMEDIATE CLASS

For those who have vocabulary skill of more than 1200 Chinese words. The course aims to allow students to use Chinese in daily lives, studies and work.

ADVANCED CLASS

For those who have vocabulary skill of more than 2500 Chinese words. The course aims to enable students to discuss and communicate their ideas on general social topics.

Advanced-level Business Chinese



Textbooks contain company profile, banking business, corporate investment, recruitment, benefits package, and corporate training. Besides, the students will also be taught with some vocabularies, sentences and topics on business and work scenarios as a supplement to their course studies.

- These are special courses that are tailored for the business and workplace fields.
- Course content includes company introductions, corporate team training, corporate investment promotion, banking business, and practical vocabularies, sentences and topics that can be used in business and work scenarios.

HSK Training Course



HSK is an international standardized exam that tests Chinese language proficiency. The HSK course is a thematic course that is tailored towards HSK intermediate and advanced exam preparation. There are 3 levels in this course, namely:

HSK (Level 4) Course

HSK (Level 5) Course

HSK (Level 6) Course

The textbooks are written by the School of Chinese as a Second Language, Peking University.



Course requirements

The Chinese online summer classes are taught in small classes, each with about 15 students. Classes of the same level with fewer than 8 students will be canceled, in which case, students must choose other courses.



'Dialogue with Experts' English language lecture series

Do you want to meet and talk with the experts in China Studies? Do you want to learn more about Chinese history and culture? Do you want to get some tips on mastering Chinese?

If so, "Dialogue with Experts," English language lecture series is for you. This summer, the series of lectures will invite renowned professors of Peking University to offer eight wonderful English lectures from July to August. Most of the lecturers and professors have been engaged in the related teaching, scientific research and management for a long time. They have rich teaching experience and cultural exchange experience from the East and the West, and have made great achievements in cross-cultural communication and other fields. We believe that, attending these lectures, you can make friends from all over the world, broaden your international horizons, and gain insights.

- Time: Lectures will be held once per week and last 1.5 hours each. Announcement of the lecture series schedule will be made after the program begins.
- Topics: Lecture topics will cover content such as Chinese history and culture, language learning methods, international relations, and finance and economy.
- Certificate: Students who attend more than 75% of the lecture series will receive a certificate of attendance.



Attendance requirements

- Students should not come late, leave early or be absent from online classes.
- Students should ask for leave when they are unable to attend classes for any reason.
- If a student comes late or leaves early 3 times will be considered as absence, which will lead to a deduction of 1 point for the exam, except for those who have asked for sick leave and have presented a doctor's note. Those who ask for a sick leave without a doctor's note will be considered as taking a personal leave. A personal leave (i.e., being absent for 2 class hours), will result in a loss in grade by 0.5 point for the exam.
- In principle, those who have accumulated absences totaling one fourth or more of the total number of class hours, will be unable to obtain a grade for the course.
- Students who are unable to attend online classes on time due to different time zones will not be considered absent if they complete their study within 48 hours after the end of the class.



Exams and Grade Components

- The overall course grade will be based upon 3 components: score on the course completion exam, scores on regular assignments and tests, and attendance.
- Students will be offered an official transcript and a Short Overseas Exchange Program of Peking University course completion certificate.



03

PROGRAM DETAILS - OFFLINE CLASS

Enrollment only for foreign students currently in mainland China



Course Arrangement

Duration

6-week (July 4th, 2022~ August 12th, 2022)

Class Mode

Offline Class at campus in small classroom environment

Course Arrangement

Chinese Reading class and Chinese Speaking class

- Intensive Chinese Reading: Emphasis is placed on improving students' written expressions. By learning Chinese vocabulary, grammar, etc., students' comprehensive skills, especially reading and writing, are trained in focus
- Spoken Chinese: Emphasis is placed on improving students' verbal skills. Goal is to improve students' ability to communicate using Chinese by learning common vocabulary and syntax in spoken language.

Classes are held Monday through Friday from 8:00 to 12:00, 4 hours per day,

There is a weekly lecture held in English

A series of extracurricular practical and cultural activities will be organized during the course.



Class Assignment

Peking University Chinese Language Summer School will conduct self-evaluation tests for accepted applicants, so that there are 8 to 20 students in each course. To make the best use of our educational resources, classes with less than 8 students will be canceled and students will have to choose other courses. Below are the classes and the corresponding abilities required:

BASIC CLASS

Mainly for students with zero Chinese ability, or at the stage of learning Pinyin, common Chinese characters and simple Chinese words and sentences.

ELEMENTARY CLASS

For those who have vocabulary skill of more than 200 Chinese words. The class mainly teaches basic grammar and daily expressions.

INTERMEDIATE CLASS

For those who have vocabulary skill of more than 1200 Chinese words. The course aims to allow students to use Chinese in daily lives, studies and work.

ADVANCED CLASS

For those who have vocabulary skill of more than 2500 Chinese words. The course aims to enable students to discuss and communicate their ideas on general social topics.



Visa, Insurance and Accommodation

Requirements for arriving to school

- Students who have been in China or have returned to China from overseas (including Hong Kong, Macau, and Taiwan) for 28 days(The date of entry is subject to the entry stamp on the visa page of the passport), and who are not or have not passed through areas with high or medium-risk domestic epidemics can be checked in offline.
- Students coming from other regions than Beijing must carry a Health Kit green code and negative PCR test result conducted within 48 hours. Entrance to campus will be allowed after the documents above are reviewed.
- If there are students who come from areas where there were cases of COVID-19 infection 3 weeks before the registration of the offline course, they should not register offline. Their courses will be turned online, and the team will refund the cost difference between the online and offline courses.
- Students must strictly abide by the school and community epidemic prevention and control policies, and cooperate with the implementation of relevant control measures during the semester.
- Students should take care in-personal protection, adhere to wearing of masks, frequent hand washing and regular ventilation. In case of fever, dry cough, expectoration, sore throat, fatigue, diarrhea, abnormal taste and smell, go to nearby hospital immediately and report to the international student office.

Visa and insurance

- Visa: Students should hold a valid X2 visa during their studies at the school. Due to the epidemic prevention and control, Peking University will not issue visa application forms to overseas students for the time being.
- Insurance: All Students who come to school should already have individual insurance applicable exclusively to China (Global Travel Insurances are not accepted).

On-campus accommodation

Peking University provides a small number of international student apartments for students to apply on a first come, first served basis. The accommodation cost is 140 yuan per person per night. If the on-campus accommodation is full, students need to find off-campus accommodation by themselves. Students living outside the school shall go to the local police station for accommodation registration within 24 hours after arriving at the accommodation address. When reporting to the school, you must submit the detailed address and telephone number of your residence.



04

'DIALOGUE WITH EXPERTS' ENGLISH LANGUAGE LECTURE SERIES

Do you want to meet and talk with the experts in China Studies? Do you want to learn more about Chinese history and culture? Do you want to get some tips on mastering Chinese?

If so, "Dialogue with Experts," English language lecture series is for you. This summer, the series of lectures will invite well-known professors of Peking University to offer eight wonderful English lectures from July to August. Most of the lecturers and professors have been engaged in the related teaching, scientific research and management for a long time. They have rich teaching experience and cultural exchange experience from the East and the West, and have made great achievements in cross-cultural communication and other fields. We believe that, attending these lectures, you can make friends from all over the world, broaden your international horizons, and gain insights.

- Time: Lectures will be held once per week and last 1.5 hours each. Announcement of the lecture series schedule will be made after the program begins.
- Topics: Lecture topics will cover content such as Chinese history and culture, language learning methods, international relations, and finance and economy.
- Certificate: Students who attend more than 75% of the lecture series will receive a certificate of attendance.



05

EXAMS AND TRANSCRIPT

Within two weeks after the end of the course, Peking University will provide qualified students with certificates and transcripts. If the student is absent for more than 25% of the total class hours, he/she will not be able to obtain the certificate; The total score of the course is composed of the final examination score, participation score and attendance. The score adopts the 100-point system, and one transcript is given per person. Relevant specific requirements are as follows:

- Do not be late, leave early, or be absent. If you are unable to attend class for some reason, you must ask for leave beforehand.
- 0.5 points will be deducted for one absence due to personal issues (one time refers to 2 class hours); Being late or leaving early for 3 times is considered as one absenteeism, and 1 point will be deducted in the final examination; No points will be deducted for sick leave with doctor's diagnosis certificate and leave slip. If there is no doctor's leave slip, it will be regarded as personal issues leave.
- If the cumulative absence of a course reaches or exceeds 25% of the total class hours, in principle, the course score cannot be obtained.



06

PROGRAM SCHEDULE

	PROGRAM TYPE	DATES	LANGUAGE-LEVEL
ONLINE COURSES	4-week program A	July 4-July 29	Basic, elementary, intermediate and advanced classes
	6-week program	July 4-August 12	
	8-week program	July 4-August 26	
	4-week program B	August 1- August 26	
	Advanced Business Chinese (6-week program)	July 4-August 12	Advanced class
	HSK Training Course (6-week program)	July 4-August 12	Intermediate, advanced classes
OFFLINE CLASS	6-week program	July 4 -August 12	Basic, elementary, intermediate and advanced classes



07

APPLICATION



Application Requirements

- Be a non-Chinese citizen;
- Be between 18 and 50 years of age (inclusive);
- Have a high school diploma or above;
- Be in good health, friendly to China and have no criminal record.



Application Period

Applications will open on December 1, 2021. Programs starting on July 4, 2022 will stop accepting applications at 24:00 on Jun 15, 2022. Programs starting on August 1, 2022 will stop accepting applications at 24:00 on July 25, 2022. Offline program starting on July 4, 2022 will stop accepting applications at 24:00 on June 1, 2022. (The above date and times are all Beijing time.)



Application Documents (submit scanned copies online)

A Photocopy of your passport information page.

B Certificate of your highest academic achievement, for example a diploma or degree, or proof of enrollment at your current educational institution.

C A reference letter in either English or Chinese.

D HSK Certificate or official transcripts of full-time Mandarin training (if applicable).

Go to application website, <http://www.studyatpku.com/>

Register for an account

Online Application

Non-degree Programs

Short-term Program

Select program type

Fill in the form, upload the documents and submit

Pay the application fee and tuition fee

Finish the Chinese Proficiency Test

Welcome to the PKU Community

Chinese Language Proficiency Evaluation

We will evaluate each student's Chinese proficiency based on the results of an online Chinese proficiency test and put students into classes based on their level for the group teaching. The specific test method will be announced by email after the students are admitted. Complete the online Chinese proficiency test within one week after receiving the email/message. After being admitted, students of the Advanced Business Chinese Program (6-week program) and HSK Level 4, Level 5, and Level 6 courses (6-week program) do not need to take the online Chinese proficiency test; however, all other students must complete the test within that one week.



08

PAYMENT & REFUND POLICY



Fees (RMB yuan)

- Application Fee (non-refundable): **¥400**
- Tuition Fee (including fees for electronic textbooks):
 - Four-week program: **¥6,000**
 - Six-week program: **¥7,000**
 - Eight-week program: **¥8,000**
 - Advanced-level Business Chinese (6-week program): **¥8,000**
 - HSK Training Course (6-week program): **¥8,000**
- Offline Class (6-week program):
¥12,000(Including Textbook Fees)
- Payment method: Online payment (applicants will receive an electronic receipt after the payment).



Refund Policy

For courses starting on July 4, 2022

On or before April 30, 2022: 50% refund of tuition fees.

Between April 30 – May 30, 2022: 25% refund of tuition fees.

On May 31, 2022 or later: no refund.

For courses starting on August 1, 2022

On or before May 31, 2022: 50% refund of tuition fees.

Between May 31 – June 30, 2022: 25% refund of tuition fees.

On July 1, 2022 or later: no refund.



09

SPECIAL NOTE

In 2022, the offline courses of Peking University Chinese Language Summer School will be carried out in an orderly manner according to the epidemic situation and school epidemic prevention and control policies. Any subsequent changes or updates will be notified in advance. And also in 2022, the Chinese Language Summer School of Peking University will continue to award the title of “The Star of China” to the students with great academic progress, outstanding performance and excellent performance during the semester (the specific measures will be notified in detail after the course starts. Please stay tuned).

