

Ccourse

Each spot's reception closes 30min before the closing time.

C2 Kurumazaki-jinja Shrine

Within Kurumazaki Shrine, there is a smaller shrine for entertainment: Geinou-jinja, where many famous Japanese entertainers visit to pray. The rumor is that using its photo as your smart phone's standby wallpaper will bring you luck.
Opening hours: 9:00~17:00
☎ 075-861-0039



*Please park your bicycles side by side at the corner of the parking space.

C4 Matsuoo Taisha Shrine

The big red gate Torii is the symbol of this Sake-Shrine. Please also visit "Sake Museum(free)" to see sake brewing tools.
Opening hours: Weekdays, Saturday 9:00~16:00
Sunday, Public holidays 9:00~16:30
Garden & God Statues Museum Fee:
Adult:500yen Student:400yen Child:300yen
☎ 075-871-5016



A water spring at Matsuoo Taisha Shrine is called "Kame-no-i". This water is good for your longevity and revitalization. Sake brewers use this water to make their sake. A bottle (100yen) is sold at this shrine, and you can take the water to your hotel or home.

Randen Arashiyama St



A long-established sake shop where you can buy various local sake as a perfect souvenir!!
9 minutes walk from Arashiyama Station along B course, you will find "Omatto(おまつと)", sake store. There are various types of tasty sake produced by local brewers.



C1 Rokuo-in Temple

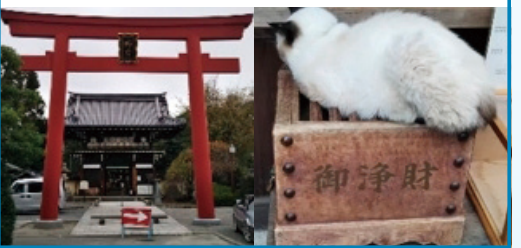
Rokuo-in is a temple with a beautiful garden with views of Arashiyama. When you pass through the gate, you will see a maple tunnel and moss carpet.
Opening hours: 9:00~17:00 Fee: 400yen
☎ 075-861-1645



*Please park your bicycles side by side at the corner of the parking space.

C3 Umemiya Taisha Shrine

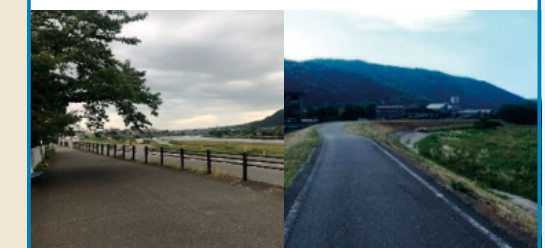
In spring, we can enjoy the plum flowers. However beautiful flowers bloom throughout the four seasons. It is one of the three major Sake-Shrines in Japan. Local cats at this shrine are very cute. Cat lovers in Japan want to visit here at least once in their lifetime.
Opening hours: 9:00~17:00
Garden entrance fee: Adult:600yen Child:400yen
☎ 075-861-2730



*Please park your bicycles side by side at the corner of the parking space.

C5 Katsuragawa Cycling Road

45km cycling road from Arashiyama to Izumi-birdge in Kizu City. It is refreshing for you to cycle on a part of it. You would surely enjoy nice views around Togetsu-kyo Bridge and Katsura River.



C6 Senko-ji Temple

Optional course

A temple 1km upstream from Togetsu-kyo Bridge. After going up the steep road, you will enjoy the superb view of Hozu-kyo Valley and city area. You can ring the temple bell up to three times per person.
Opening hours: 10:00~16:00 Fee: 400yen
☎ 075-861-2913



Please walk from the parking near the pier.
abt 15min one way on foot

Information

User of "RANBURA-Rent-a-Cycle" can take a footbath at Randen-Arashiyama Station for free!

●Open: 9:00am Close: 8:00pm(Untill 6:00pm in winter)
*Reception closes 30 min before closing time.

After cycling, you can take a footbath for free. If you want to take a footbath only, you can buy a ticket at the station information center. Footbath water, brought from the source of Arashiyama Onsen (hot spring), is beneficial for your skin. The health benefits of hot spring baths include recovery from fatigue and improved overall health. After enjoying cycling, you can take a break in real hot spring to relieve the weariness, and you can get a towel as a souvenir. Please enjoy it!



Advice for tourists in time of disaster

If a disaster occurs,
①Stay where you are and provide for your safety.
②When the conditions are safe, please go to the emergency evacuation area, and follow the instructions given by the staff. Please check the nearest emergency evacuation area on this map page.
*Via the right QR code, you can get "Kyoto City Guide Map for People Stranded During Disasters". For more information, please visit the following URL: <https://www.bousai.city.kyoto.lg.jp/kitakushien/>.



For more information

●Kyoto General Tourist Information Center
☎075-343-0548 8:30~19:00→English, Chinese and Korean support available
●AMDA International Medical Information Center (<https://www.amdamedicalcenter.com/>)
☎03-6233-9266 Monday through Friday 10:00~16:00
The medical telephone consultation is possible in English as well as some other languages. Please refer to the site via the right QR code for more information.
●VoiceTra(<http://voicetra.nict.go.jp/>)
Voice Translation App in 31 languages



Restaurants and Souvenir shops around Randen-Arashiyama Station:A recommendation from students editors
(The color of the frame indicates a cycling course: "A", "B" or "C".)

1

Sagano Kaede Café
Sweets that blend Japanese and Western tastes are very popular!
☎ 075-756-7415
Open: 12:00~17:00
Closed: Thu
(changed in each season)

2

Adashino Mayumura
You can buy pretty dolls made from silkworm cocoon.
☎ 075-882-4500
Open: 9:00~17:00
7days a week

3

Pizzeria Lugara
You can eat in or take out a brick-oven pizza
☎ 075-203-9391
Open: 11:00~18:00
Closed: Wed & some holidays

4

Liquor Store OMATTO
An old sake shop selling local sake from Kyoto.
☎ 075-871-0138
Open: 10:00~17:00
Closed: Thu

5

Saga Tofu Morika
Famous tofu shop & factory in Kyoto
☎ 075-872-3955
Open: 9:00~17:00
Closed: Wed(or Tue)

6

Nakamura Deli
Pork-cutlet sandwich perfect for lunch!
☎ 075-863-1888
Open: 8:00~18:00
Closed: some holidays

7

London Books
Very fashionable secondhand bookstore.
☎ 075-871-7617
Open: 10:00~19:30
Closed: Mon (and third Tue)

8

Rickshaw café
Cafe latte is very nice!
☎ 075-334-6462
Open: 9:00~18:00
It changes depending on the public conditions
Closed some holidays

9

CHAVATY Kyoto Arashiyama
High quality Tea Latte & Scones are delicious!
Open: 10:00~19:00 year round

Fukuda Museum of Art

☎ 075-863-0606
Open: 10:00~17:00 *The entrance gate closes at 16:30
Closed: Tue (Wed if Tue is a holiday)
Admission: Adult:1,300yen, High school student:700yen
Elementary and Junior high school student:400yen
Disabled person with a helper:700yen
*Please ask our receptionist by telephone where you can park your bicycle before visiting here.



Arashiyama Monkey Park

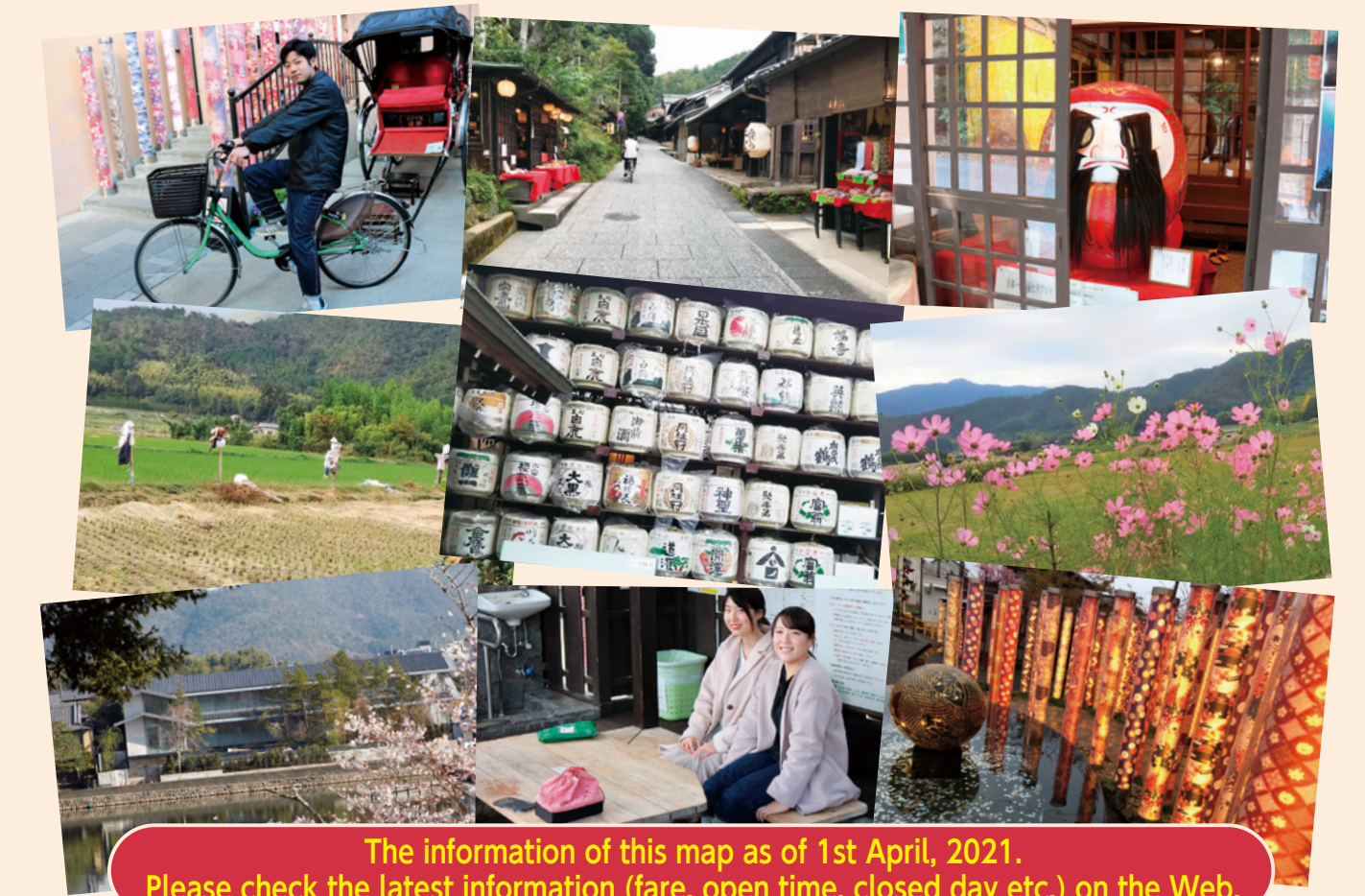
☎ 075-872-0950
Open: 9:00~16:30 (last admission: 16:00)
Open all year (closed in stormy weather)
Admission: Adult:550yen (high school student and older), Child:250yen (4 years of age to junior high school student)



University Students' Recommendation

Half Day Cycling around Arahiyama

Enjoy Hidden Attractions in the Arashiyama Area



The information of this map as of 1st April, 2021.
Please check the latest information (fare, open time, closed day etc.) on the Web.

Course plan	Riding time	Bicycle type	Attractive points & Course contents
A	abt 30 min	Electric bicycle	Holy place of Haiku: Rakushisha/Adashino Nenbutsu-dera Temple's stone-buddhas and stone-towers/Quiet bamboo grove You can enjoy the "backyard of Kyoto", where there are lots of spots deeply related to classical Japanese literature. There are plenty of nice cafés and restaurants along the road.
B	abt 35 min	Bicycle with 3gears	Sutra copying & tracing a picture of a Buddhist image at Daikaku-ji Temple/Osawa Pond/Beautiful view from Mt. Saga/Hirosawa Pond After sutra copying at Daikaku-ji Temple, you can enjoy pastoral scenery in Kyoto. Since there are few cafés and restaurants along this course, we recommend you bring your sandwich or lunch box.
C	abt 40 min	Electric bicycle	Shrine for entertainment & arts/Pretty cats at Umemiya Taisha Shrine/Famous spring water at Matsuoo Taisha Shrine You can cycle down the bicycle path along Katsura river, and meet gods of entertainment and Sake. Please try to visit optional course to Senkou-ji Temple, where you can enjoy superb view of Arashiyama area.

*Riding time is counted by Mapion APP, and is not inclusive of staying time.

Ranbura Rent-a-Cycle at Randen-Arashiyama St.

☎075-882-5110

	9:00~17:00 (Winter season 10:00~17:00)	Reception open until 15:00
Bicycle with 3 speed gears	1day 1,100yen/2hours 600yen	
Electric bicycle (sports type)	1day 1,600yen/1day 2,000yen	

*All plans include a footbath ticket.

Planned and produced by KKSTNET(students group), in cooperation with Keifuku Electric Railroad Co.,LTD & Graphic Co.,LTD.
*This map was made with financial assistance from U-Kyo Ward in Kyoto City.

