

科研費

KAKENHI

2017.7

**KAKENHI is
Changing for
the First Time in
Half a Century!**

Before the call for proposals

- 2018 KAKENHI Screening System Reform Outline
- Screening Divisions Review

**Grants-in-Aid for Scientific
Research(KAKENHI) is the Japanese
government's only competitive funding
scheme to support researchers in
pursuing their own independent ideas.**

**Learn about
KAKENHI!**

STEP 1 Before the call for proposals is open, understand the...

- Grant categories
- Screening system
- Schedule
- Application forms and guidelines

STEP 2 Once the call for proposals begins...

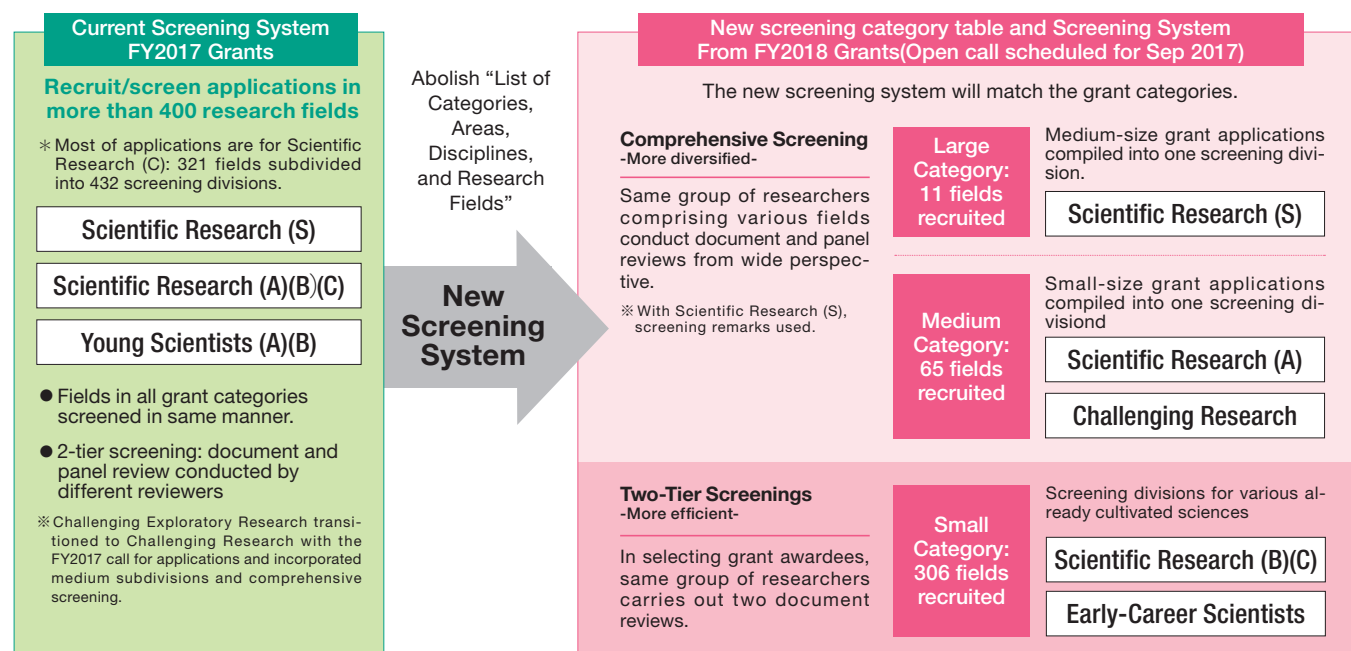
- Read the application guidelines carefully
- Check your application eligibility
- Get (confirm) your ID and password for the KAKENHI Electronic Application System

STEP 3 Write your application
Utilize the Research Office

DIVISION OF RESEARCH,
RITSUMEIKAN UNIVERSITY

- JSPS is radically revising KAKENHI application and screening in order to promote diverse and creative academic research.

Figure 5



Screening Category Review

The applicant chooses which screening category to apply in from the examples in the tables of small, medium, and large categories.

Figure 6

● Screening Division Table (small category) Excerpt

Small Category	Examples	Suitable Medium and Large Category	
		Medium Category	Large Category
01010	(Philosophy and Ethics field) Philosophy in general, Ethics in general, Western philosophy, Western ethics, Japanese philosophy, Japanese ethics, Applied ethics and so on	1	A
01020	(Chinese philosophy, Indian philosophy and Buddhist studies field) Chinese philosophy, Thought, Indian philosophy, Thought, Buddhist thought, Bibliography, Philology and so on	1	A
01030	(Religious Studies field) History of religions, Philosophy of religion, Theology, Sociology of religion, Psychology of religion, Anthropology of religion, Religious folklore, Mythology, Bibliography, Philology and so on	1	A

Small categories are the basic unit of the screening divisions and constitute the Scientific Research (B, C) and Early-Career Scientists screening divisions.

Small categories feature examples but these are only to help the applicant understand the nature of the categories and do not preclude the applicant from applying with different content.

● Screening Division Table (medium, large category) Excerpt

Large Category A	
Medium Category: Thought, Art and Related fields	
Small Category	Examples
01010	(Philosophy and Ethics field) Philosophy in general, Ethics in general, Western philosophy, Western ethics, Japanese philosophy, Japanese ethics, Applied ethics and so on
01020	(Chinese philosophy, Indian philosophy and Buddhist studies field) Chinese philosophy, Thought, Indian philosophy, Thought, Buddhist thought, Bibliography, Philology and so on
01030	(Religious Studies field) History of religions, Philosophy of religion, Theology, Sociology of religion, Psychology of religion, Anthropology of religion, Religious folklore, Mythology, Bibliography, Philology and so on

Medium categories collect several small categories and constitute the Scientific Research (A) and Challenging Research screening divisions. However, this does not preclude applicants from applying in the medium categories with content different from the small categories collected in the medium categories.

* Some small categories fall under multiple medium categories. Applicants can choose the medium subdivision most suited to their research proposal. (Some medium category also fall under multiple large divisions.)

* These translations for Screening categories are provisional for your reference. Formally, please refer to the one published by JSPS at a later date.

Large categories collect several medium categories and constitute the Scientific Research (S) screening divisions. However, this does not preclude applicants from applying in the large categories with content different from the medium categories collected in the large category.

Screening Divisions can be found on the Ministry of Education, Culture, Sports, Science and Technology (MEXT) website for details.

http://www.mext.go.jp/component/a_menu/science/detail/_icsFiles/afidfile/2016/12/22/1380669_01_1.pdf

The Office of Research Planning and Development has compiled this issue based on the information the Ministry of Education, Culture, Sports, Science and Technology (MEXT) had released as of June 2017. MEXT makes regular updates to its website on the status of KAKENHI reform. For correct application information, please look in the FY2018 Application Guidelines (to be issued in September 2017).

Figure 1 Modify Status of KAKENHI Reform (Ministry of Education, Culture, Sports, Science and Technology) (http://www.mext.go.jp/b_menu/shingi/gijyutu/gijyutu4/041/shiryo/_icsFiles/afidfile/2017/05/16/1385286_4.pdf)

Figure 2 Modify Schedule from Application to Disbursement (Japan Society for the Promotion of Science) (https://www.jsps.go.jp/j-grantsinad/01_seido/02_schedule/image/h28_schedule.pdf)

Figure 3, 6 Modify KAKENHI reform pamphlet KAKENHI Reform Has Begun - To Strengthen Japan's Research Capacity (Ministry of Education, Culture, Sports, Science and Technology)

Figure 4, 5 Modify KAKENHI for Scientific Research Screening System Reform (Ministry of Education, Culture, Sports, Science and Technology) (http://www.mext.go.jp/component/a_menu/science/detail/_icsFiles/afidfile/2017/01/19/1367698_01.pdf)

2018

KAKENHI is Changing for the First Time in Half a Century!

With the FY2018 call for applications, the structure of KAKENHI will change greatly. In line with the Basic Policy, there will be a rearrangement of the KAKENHI grant categories and also significant changes to the screening system.

Basic Policy

Japan's ability to continue producing outstanding research results and maintain its international standing is in doubt.

In light of this, the Ministry of Education, Culture, Sports, Science and Technology's Council for Science and Technology has set out to position research based on researchers' independent ideas (scientific research) as a source of national strength; prioritize innovation, interdisciplinarity, integration, and internationalism as contemporary demands on scientific research; and move forward radical reforms, especially of Grants-in-Aid (May 26, 2014).

Figure 3

Must be challenging

The research must attempt to develop new knowledge by applying creative investigative skills based on the knowledge of researchers.

Must be comprehensive

With emphasis on the diversity of scientific research, the research should seek to gain a complete overview of subcategorized knowledge even while building on the specialized knowledge in academic fields as traditionally organized.

Must be cross-discipline

The research should give birth to new academic disciplines, through coordination and cooperation by researchers in different fields and various people involved locally and overseas.

Must be international

The research must be relativized through discussion and validation by the global academic community, in all kinds of areas including the humanities and social sciences as well as natural sciences, contributing to the world by achieving globally recognized excellence or proposing a new research framework.

Outlook of KAKENHI Reform

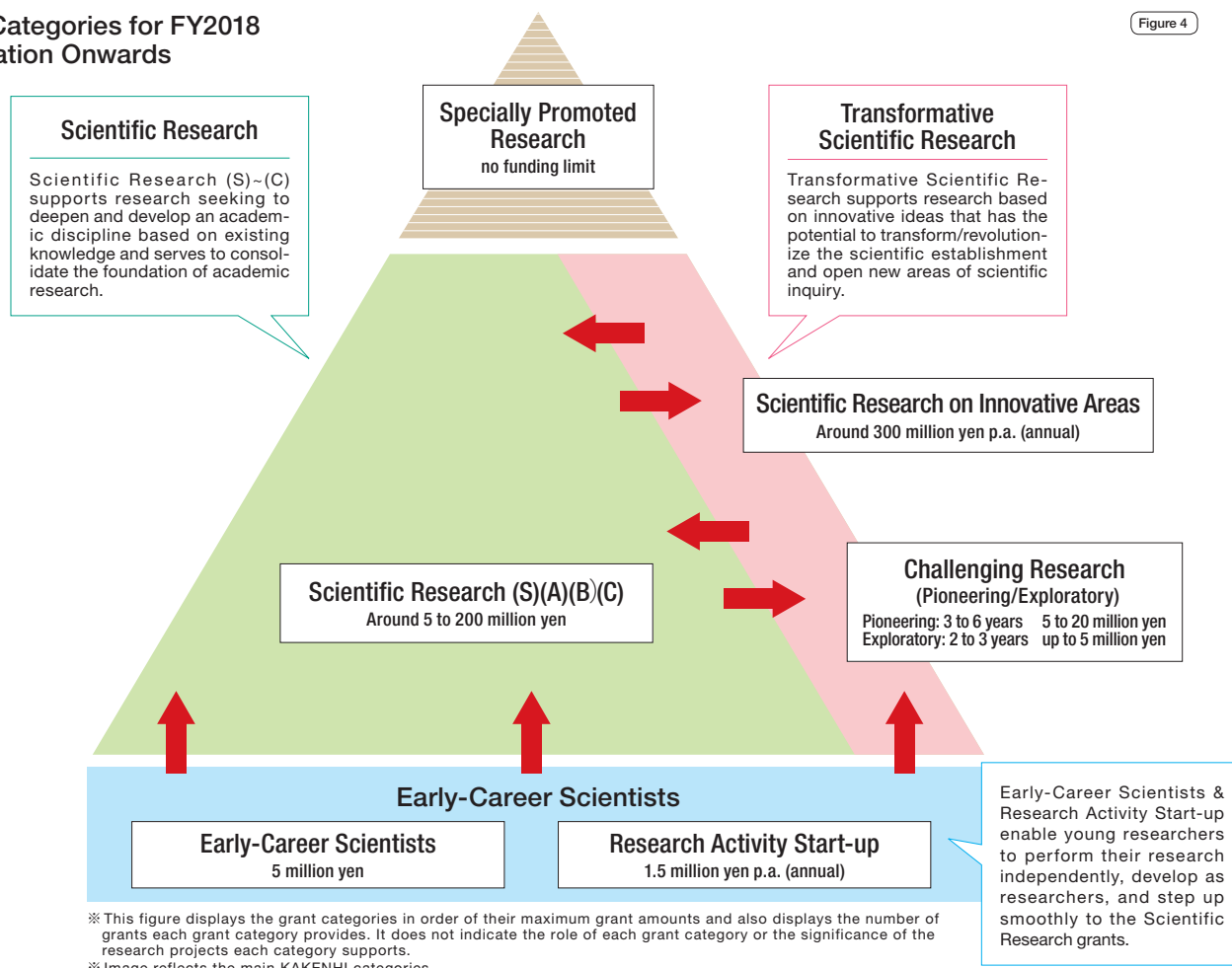


In FY2017, the Ministry of Education, Culture, Sports, Science and Technology revised Challenging Exploratory Research, splitting it into Challenging Research (Exploratory) and Challenging Research (Pioneering). These categories were the first to have screening under the new screening system, in advance of the new screening system's full-scale introduction in FY2018. In FY2018, both Scientific Research and Young Scientists will transit to screening with the new screening divisions and screening method, opening a revolutionary stage in reforms. Further, Young Scientists (A) will

become part of Scientific Research, Young Scientists (B) will have a name change to Early-Career Scientists, Early-Career Scientists will limit application to those who have completed their PhD within the last eight years (with a three-year transitional measure allowing those who have not yet completed their PhD to apply), and Specially Promoted Research (which does not allow a single researcher to receive multiple grants) will undergo a readjustment of its grant categories.

Grant Categories for FY2018 Application Onwards

Figure 4



Learn about KAKENHI

I want to accelerate my research career! I found a topic I want to explore more!
Answers to the simple questions about the KAKENHI application process!!

STEP
1

Before the call for applications begins

POINT 01

Understand the Grant categories

Look at the grant categories with the following in mind.

1 Research Topic

What sort of research goals and directions do you want to pursue in your own career as a researcher?

2 Research Team

Will you do research yourself or with a group?

3 Research Period

How many years is your research plan?

4 Research Costs

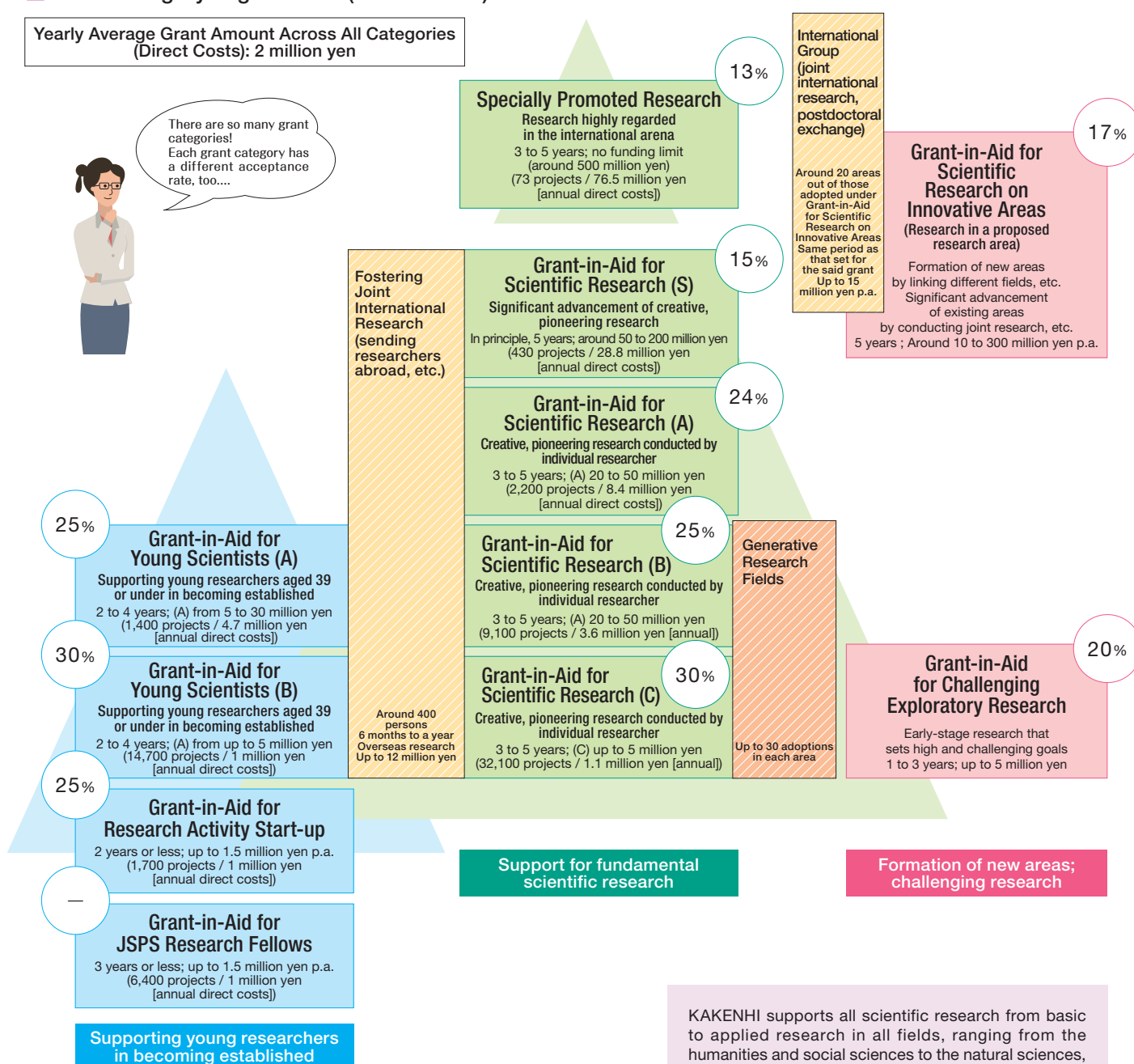
How much research funding do you need to achieve your research goals?

Grant Category Organization (as of FY2016)

Figure 1

Yearly Average Grant Amount Across All Categories (Direct Costs): 2 million yen

There are so many grant categories!
Each grant category has a different acceptance rate, too....



※In each grant category, numbers in parentheses indicate grant projects (new + continuing) and average grant amounts (total and direct costs) [round numbers], while numbers in circles indicate acceptance rates.

KAKENHI supports all scientific research from basic to applied research in all fields, ranging from the humanities and social sciences to the natural sciences, with grant categories of a range of sizes and modes. KAKENHI selects creative and pioneering research projects for funding through peer-review (several researchers in related fields review applications).

I want to help younger researchers! The motivations for embarking on research are wide and varied.


POINT 02

Understand the screening system

Screening is made not by grant category. It is by the screening division the applying researcher selected for their research plan. Because the screening is peer review (several researchers in related fields review applications), the applicant's selection of an appropriate screening division can be the difference between success or failure.


1 On the Japan Society for the Promotion of Science's homepage, you can check the sorting of the up to 400 screening divisions from FY2017.

※ In FY2018, the screening divisions will see drastic changes. Check the outline in this issue and the details in the Screening Division Table posted on the Ministry of Education, Culture, Sports, Science and Technology's homepage.
http://www.mext.go.jp/component/a_menu/science/detail/_icsFiles/afildfile/2016/12/22/1380669_01_1.pdf



https://www.jsps.go.jp/j-grantsinaid/03_keikaku/data/h29/h29_koubo_08.pdf

2 Database of Grants-in-Aid for Scientific Research (KAKEN Database) centralizes information on past Grants-in-Aid projects. You can use the free word search function to look up research topics and keywords you are interested in and see what research topics and keywords were successful in which screening divisions.



<https://kaken.nii.ac.jp/ja/index/>

POINT 03

Understand the schedule

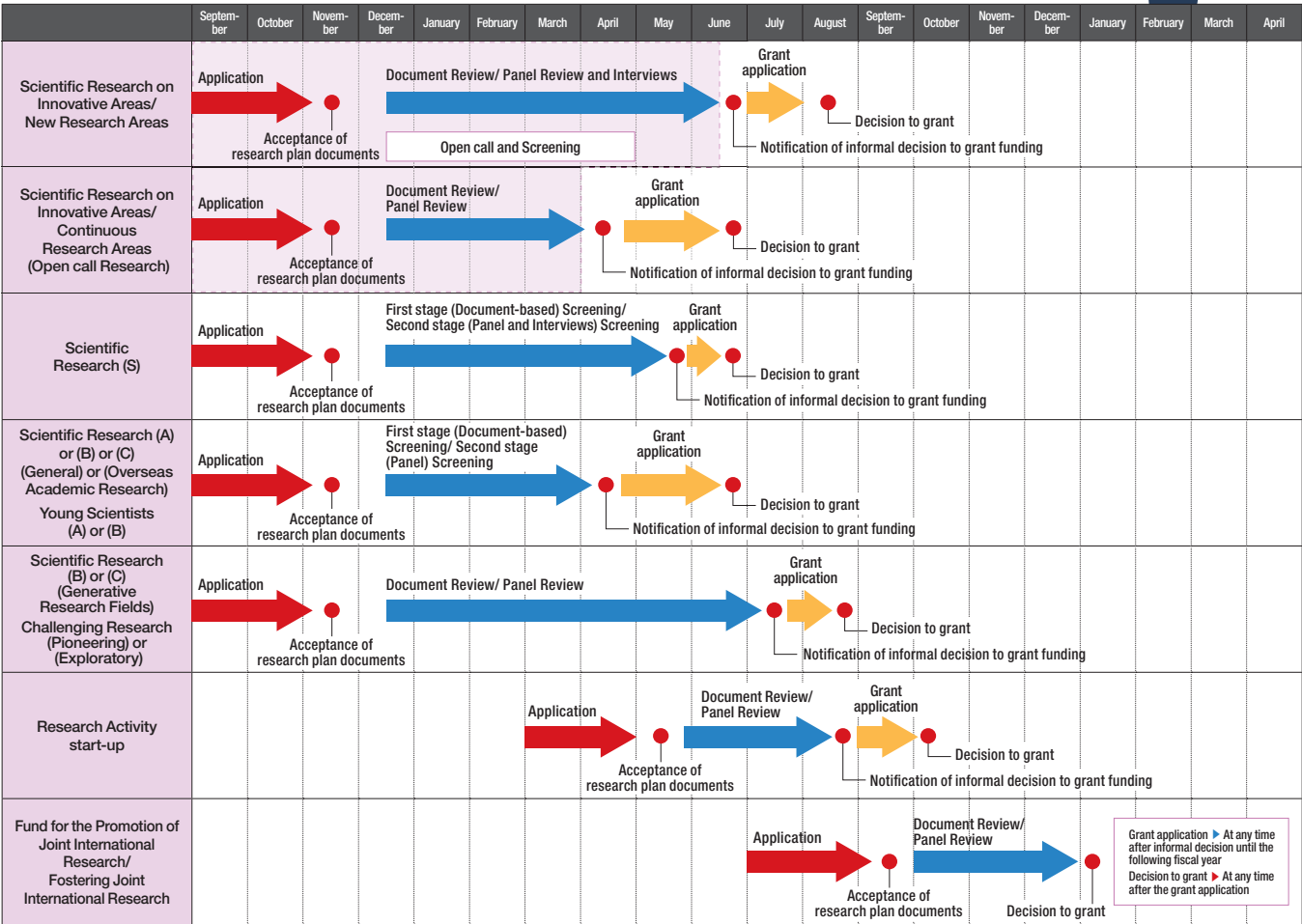
Scientific Research, Young Scientists, and Challenging Research account for the majority of applications and have their the call for proposals in the fall of the preceding year. In contrast, Research Activity Start-up, which supports researchers who have just begun working at a university and are applying to KAKENHI for the first time, has its call for applications in spring of the same year. Different grant categories have different screening divisions and screening methods. Grant categories that require screening interviews have comparatively longer screening

terms and different grant categories also release grant results (informal disbursement notices) at different times.



Modify Schedule from Application to Disbursement (Excerpt as of FY2017)

Figure 2



POINT 04

Application forms and guidelines

Each grant category has different application forms. Depending on the grant category and screening division, a single reviewer may look at over 100 applications. The time they will give to a single application is very limited. The first step to obtaining a grant is to fill the ten-odd pages of the application with text and figures that will per-

sue the screener.

To begin, download the previous year's application procedures, application forms, and application instructions for the relevant grant category and start drafting an application.

FY2017 Application Information (for reference)



Specially Promoted Research, Scientific Research (S/A/B/C), Challenging Research (Pioneering/Exploratory), Young Scientists (A/B)

https://www.jsps.go.jp/j-grantsinaid/03_keikaku/download.html

Scientific Research on Innovative Areas, Special Purposes

http://www.mext.go.jp/a_menu/shinkou/hojyo/boshu/1376435.htm

Research Activity Start-up

https://www.jsps.go.jp/j-grantsinaid/22_startup_support/download.html

STEP

2

Once the call for applications begins

POINT 05

Read the application guidelines carefully

The Japan Society for the Promotion of Science revises the application procedures every year. Because FY2018 will be the centerpiece of the KAKENHI reforms, it is expected that significant revisions to the screening system and moderate revisions to Young Scientists and Specially Promoted Research are made. Please be sure to check the correct information on grant categories, screening field, schedule, and application documents once it becomes available.

POINT 06

Check your application eligibility

Ritsumeikan University allows faculty members in an eligible employment position to apply for KAKENHI. For details, please see the application eligibility table on the Division of Research homepage (to be updated September 2017 and March 2018).

Japan Society for the Promotion of Science Homepage Electronic Application System Top Page



<http://www.shinsei.jsps.go.jp/kaken/index.html>

POINT 07

Get (confirm) your ID and password for the KAKENHI Electronic Application System

Application is made through the KAKENHI Electronic Application System. Researchers applying for the first time should ask their campus' Research Office to issue them an ID and password for the system in advance. Researchers who have applied in the past can continue to use the same ID and password. If you have forgotten your password, please consult with the Research Office on your campus.

Ask your Research Office to issue you an ID and password for the KAKENHI Electronic Application System



STEP

3

Write your application × Utilize the Research Office

The Research Offices offer comprehensive assistance with KAKENHI application. Each Research Office holds an application guidance session after the call for proposals opens and checks application forms against the Procedures for Preparing and Entering a Proposal. Further, the Research Offices also plan to assemble KAKENHI application advisors, professors who have either established a record of successful KAKENHI applications or served as KAKENHI

application screeners. The Research Offices will proactively send out important KAKENHI application information through the Research Division homepage and by email. If you have any questions or concerns about applying for KAKENHI, please feel free to ask the Research Office on your campus.

Write my application early and consult with my Research Office! Take advantage of the office's support to get advice from multiple perspectives!

Research Office Grants-in-Aid Application Contacts by Campus

Kinugasa Campus / Suzaku Campus
Research Office at Kinugasa Campus (Shugakukan 2F)
Tel: 075-465-8224
mail: shinseik@st.ritsume.ac.jp

Biwako-Kusatsu Campus
Research Office at Biwako-Kusatsu Campus (Research Center for Disaster Mitigation System 3F)
Tel: 077-561-2802
mail: b-kaken@st.ritsume.ac.jp

Osaka Ibaraki Campus
Research Office at Osaka Ibaraki Campus (Building B 5F)
Tel: 072-665-2570
mail: oicro@st.ritsume.ac.jp

