

AY2023 NEXT Student Fellow RARA Student Fellow APPLICATION GUIDELINES

立命館大学
NEXTフェローシップ・プログラム

大学院キャリアパス事業室



やわらかアタマの 研究者 育てます

今後ますます複雑化・多様化する時代の中で、
様々な課題に果敢に取り組み、解決することができる、
新たな価値を創造することができる研究者を育てる――
それが「立命館大学NEXTフェローシップ・プログラム」です。



R RITSUMEIKAN



立命館先進研究アカデミー 次世代研究者育成プログラム
RARA学生フェロー

<Schedule>

[2nd recruitment]

Jan. 23, 2023 ~

Feb.27, 2023

<Application Documents >

- ① Application Form
- ② Self-promotion video
- ③ (planned) Supervisor Recommendation

[Inquiry]

NEXT Student Fellow

Office of Graduate Studies
(Graduate Student Career
Path Support Center)

e-mail:

next-fs@st.ritsumei.ac.jp

TEL: 075-465-8195

RARA Student Fellow

RARA Office

e-mail:

rara@st.ritsumei.ac.jp

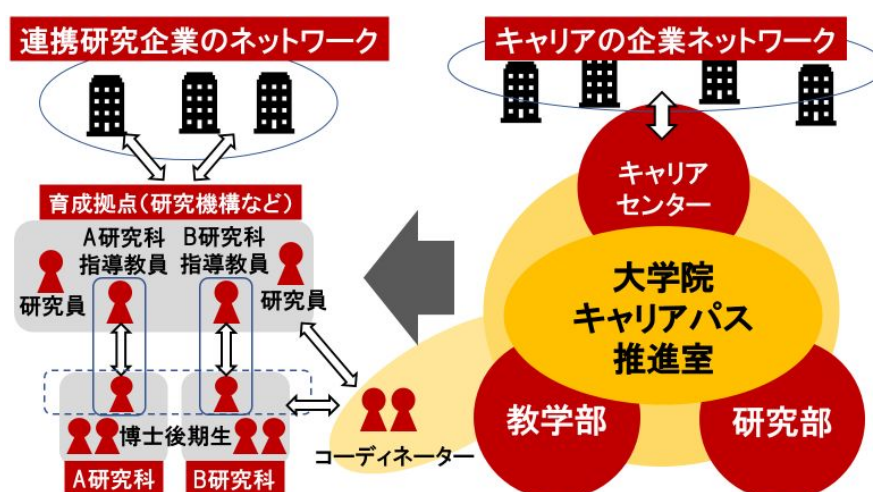
TEL: 075-813-8199

AY2023 Ritsumeikan University NEXT Fellowship Program Application Guidelines for NEXT Student Fellow (2nd recruitment)

1. Outline of “Ritsumeikan University NEXT Fellowship Program”

Ritsumeikan University sets forth “A next-generation research university that creates new value” and “A university that produces innovative and emergent human resources” as its vision in the Academy Vision “R2030 Challenge Design”. In order to realize this, it aims to systematically develop highly specialized human resources who have interdisciplinary perspective and the ability to have their expertise be implemented in society, in addition to deep expertise. As part of that, “Ritsumeikan University NEXT (New Educational Xross-Training) Fellowship Program” starting in AY2021 supports outstanding and highly motivated students who develop themselves as highly specialized human resources until completion of doctoral programs by offering the Support Fund and the Research Expenses, and the environment to engage in interdisciplinary and cutting-edge research activities. Ritsumeikan University was selected as a recipient of 「科学技術イノベーション創出に向けた大学フェローシップ創設事業 (University Fellowship Founding Project for Innovation Creation in Science and Technology)」 by MEXT, and this program has been implemented and managed by the Graduate Student Career Path Support Center*.

*The organization to support the career path of graduate students by collaborating with other departments and offices in major issues such as entrance examination, coursework, career, scholarship programs etc.
http://www.ritsumei.ac.jp/ru_gr/g-career/eng/



2. NEXT Student Fellow

NEXT Student Fellow (hereinafter referred to as “Fellow Students”) aims to acquire the higher level of research ability and necessary ability to be active in society (Transferable Skill) throughout the 3 years of each doctoral program.

(2022.12.23 版)

These abilities are important competences regardless of any career (choosing the academia or getting a job) after completing a doctoral program. We support them to earn these abilities by attending various events etc. For details, please see below.

(1) Research Ability

To deepen and develop their own research, Fellow Students will

- participate actively in the academic research projects held by each development center/research center.
- be engaged in research while collaborating with research personnel in diverse fields and human resources in communities/industries on academic research projects of development centers.

Through these activities, they can

- learn how to apply their specialized knowledge to resolve social and regional issues.
- gain the academic perspectives necessary for highly-skilled personnel and cultivate the ability to implement their knowledge in society.
- gain the multifaceted perspectives.

(2) Transferable Skill*

Training programs and seminars will be offered for Fellow Students to acquire the necessary skills to be active in society. To participate in seminars after knowing your strengths and weaknesses can make you acquire the necessary skills.

Transferable Skill is not only advantageous when getting a job, but also very important on pursuing research. You can expand your business opportunities after completing a doctoral program by earning this transferable skill.

* Among the skills needed as a member of society such as communication skill and project management skill etc., it especially indicates the skill which can be converted and utilized. Transferable means “can be moved and carried”. We focus the skill with high flexibility even if people move/change jobs beyond companies, business categories/industries and areas etc. Transferable Skill is an essential skill for each to demonstrate the unique, professional knowledge and technique, and achieve results after acquiring them.

3. Support for “NEXT Student Fellow”

In addition to financial support, generous support such as seminars only for Fellow Students and arrangement of coordinators are offered to Fellow Students.

(1) Seminars only for Fellow Students

① PBL (Project-based Learning) “Think solutions for SDGs challenges”

Fellow Students will be in a group, select one SDGs challenge and formulate the solution by combining each research. Regarding how to return each ongoing research to society, they will get an interdisciplinary perspective by combining each research with others, and aim to newly develop their research.

Moreover, independence, leadership, communication ability, problem setting and problem solving skills earned through PBL are essential skills to promote each research.

② Logical Communication Training

This is a training to learn the method to summarize own idea/thinking and explain clearly, and acquire the technique to make emails which are easy for readers to understand.

These skills acquired through training programs will improve the quality of research presentation as well as be helpful in society.

In addition to these seminars, various seminars to acquire the transferable skills such as “Career Management Seminar”, “Matching Seminar between doctoral students and companies” will be held by Graduate Student Career Path Support Center.

Coordinators will introduce these programs considering each research plan and research progress. We recommend them to develop their career by taking a balance of their research and career.

(2) Coordinator assigned only for Fellow Students support them by thinking together

Two coordinators from private companies will conduct interviews with Fellow Students twice a year, in the beginning of the academic year and Fall Semester.

In this interview, coordinators will think Fellow Students’ field of expertise, strengths and weaknesses and awareness of career etc. together. They will also give advices and guidance regarding career development. Coordinators will be also advisors who will look back the half year of each Fellow Student and think/consider together by confirming how they grow and what problems they have.

Regarding how to manage research and career development together, and participation in the academic research projects held by each development/research center, Fellow Students will talk to each supervising professor and work on them without any difficulty.

(3) Communication among Fellowship Students beyond graduate schools

In addition to exchange through seminars etc., events to build a network will be held periodically. There are some cases where students started a joint research through these exchange and network. Moreover, attending these events can be good chances for you to talk about daily research activities, share and consult about career information after completing a doctoral program with others, as well as enrich your research life which tends to be lonely.

(4) Graduate Student Career Path Support Center will fully back up

Implementation and management of this program, and support for Fellow Students will be mainly conducted by the Graduate Student Career Path Support Center.

4. Application Details

Program	Ritsumeikan University NEXT Student Fellow
Number to be accepted	(2 nd recruitment) 11
Employment Period	- April 1, 2023 ~ March 31, 2026 (3 years) - April 1, 2023 ~ September 25, 2025 (2.5 years) for those who enroll in September 2022
Eligibility	Those who fall under any of the following. <u>This, however, excludes MEXT Japanese government-sponsored international students, foreign government scholarship recipients, JSPS Research Fellowship for Young Scientists, recipients of non-concurrent scholarships. Among adult students, those who can receive the amount equivalent to the living expenses (2,400,000 yen per year as a standard) from the company which they belong to are also excluded.</u> 1) Those who passed the entrance exam for the doctoral program starting in AY2023 (except four-year doctoral program). 2) Those who had enrolled in the graduate school which has an eligibility to apply for this program in September 2022. 3) Those who will be enrolled in the 3 rd year of (or equivalent to) the integrated doctoral program. *As of an application, those who are currently taking "Preliminary Project Seminar III" (April enrollment) OR who had already taken a credit of "Preliminary Project Seminar III" (September enrollment).

	<p><For details, please ask the Administrative Office, Inter-Faculty Graduate Schools at Kinugasa campus></p> <p>4) Those who are enrolled in the 2nd year of (or equivalent to) the four-year doctoral program in AY2023.</p> <p>*Those who cannot fulfill the eligibility above as of April 1st, 2023, even if they are selected as a NEXT Student Fellow, their status as a NEXT Student Fellow will be revoked.</p>
Obligations	<p>1) Complete their programs during the standard period of study.</p> <p>2) Engage in research activities and produce research results with awareness and responsibility.</p> <p>3) Actively participate in training programs (including those related to career development) designated by the Graduate Student Career Path Support Center or coordinators.</p> <p>4) Attend research ethics and submit a certificate of attendance.</p> <p>5) Attend compliance education and submit a certificate of attendance.</p> <p>6) Submit the following documents by the respective designated dates.</p> <p>a. Research Plan as of the beginning of the academic year</p> <p>b. Research Achievements Report</p> <p>c. Progress Report on the previous half-year activities.</p> <p>d. Self-Assessment Report as of the end of the academic year</p> <p>7) Undergo an end-of-year continuing review (conducted by the Graduate Student Career Path Support)</p>
Support Fund/ Research Expenses* ¹	<p>1) Support Fund to engage in research activities: 180,000 yen per month (2,160,000 yen annually) (taxable) *²</p> <p>2) Research Expenses: up to 340,000 yen annually *³</p>
Other	Be a role model for other students and be actively involved in providing learning and research support to other students.

*¹ Funding period for those who enroll in September will be the end of completing the 3rd year of doctoral Program (in September). In case you are not allowed to enter Japan due to the immigration restrictions by the Japanese Government, these fund and expenses cannot be paid.

*² The fund will be paid in odd-numbered month (May, July, September, November, January, March).

*³ Research Expenses will be cost reimbursed based on receipts, invoices etc.

5. Application/Selection Schedule

Application Period: Monday, January 23, 2023 ~Monday, February 27, 2023

Results Announcement: Thursday, March 16, 2023

*Inform to the applicant himself/herself (by email)

6. Application Documents

(1) Application form (form 1)

Please convert to PDF file with your research achievements. For those currently affiliated with Ritsumeikan University, Research Achievements on Ri-SEARCH (Ritsumeikan University Search Engine of Academic Record and Career History of Young Researchers) must be attached. For those from other universities, please prepare a list of research achievements in free format) and attach it.

(2) Self-promotion video (free format)

Please create a video within 3 minutes which must include the contents below.

(2022.12.23 版)

1) Summary of your research contents and research plan

(Value and position of your research, what you are actually conducting and your plan for 3 years)

2) Career vision and plan/activities to realize it

[Points to be noted]

- * Explain your research attractively, and express your eagerness as a student fellow.
- * Shoot a video by showing the materials and your face clearly.
- * Recording method is free. Please arrange it such as recording via Zoom, recording a slideshow of PowerPoint, etc.
- * Volume of data, including (1) Application form (Form 1) and (3) Letter of recommendation Form (Form 2), must be 100MB or below.
- * Submission form must be mp4.
 - ※ Please be sure to check the operation of the sound and screen from the beginning to the end BEFORE submitting.
 - ※ mov format cannot be accepted because there is a case where the video cannot be played.

(3) Letter of Recommendation Form (form 2)

- * Please ask your prospective supervisor who will supervise the doctoral program (equivalent) to write the recommendation.

※ For details, please refer to the “Application Checklist” and make sure to prepare correctly.

※ Submitted documents such as application form will be used only for screening. All documents will not be returned once they are submitted.

※ Personal information obtained from application documents will be used only for the screening.

7. Where to submit/Submission deadline

(1) Where to submit (It is necessary to register before submission)

1) STEP 1

Please register for application from the following URL.

URL : <https://rw.ritsumei.ac.jp/survey/guest/SVA4FD0.html?key=LNG20220713114743171849486>

*If you had already registered due to the enrollment procedure etc., please go on to STEP 2.

2) STEP 2

When you access the above URL after registration, you can click “Click here to enter” and move to the screen for submission.

Please fill in the required items in the application form, upload the documents for application below in the application form, and submit them.

- (1) Application form (form 1) in PDF
- (2) Self-promotion video
- (3) Letter of Recommendation Form (form 2) in PDF

(2) Submission deadline

17:00 on Monday, February 27, 2023

8. Screening

(1) Method

Application will be screened based on the perspective below at “NEXT Fellowship Review Committee”, and the Director of Graduate Student Career Path Support Center will decide the recipients.

(2) Perspective

- 1) Reason for applying for NEXT Student Fellow (motivation)
- 2) Ability to execute research based on the research activities up to now
- 3) Appropriateness of research plan and its possibility, prospect to acquire the doctoral degree within the standard period of study
- 4) Career vision and plan to realize it

9. Others

- (1) You are allowed to apply for “RARA Student Fellow” which will be recruited at the same time.
- (2) Those who are applying for “JSPS Research Fellowship for Young Scientists” can apply for this program. However, they need to select either of the programs if they are selected as a Research Fellowship for Young Scientists.
- (3) In case you are rejected at the 1st recruitment, you can apply again in the 2nd recruitment.

[Inquiry]

Office of Graduate Studies

PIC of NEXT Student Fellow

Email : next-fs@st.ritsumei.ac.jp

TEL : 075-465-8195

NEXT Student Fellow FAQ

Q1. I had applied for the 1st recruitment, but the result was unsuccessful. Is it possible for me to apply for the 2nd recruitment?

A1. You can apply for it again.

Q2. It is necessary to write the first choice and second choice when applying. Which will be decided finally?

A2. Applications will be screened based on the applicants' requests. There is a case where the applicant will be selected as a student fellow of his/her second choice.

Q3. I wish to work in academia after completing my doctoral program. NEXT Student Fellow seems to be for students who wish to work for companies, but is this program helpful for those who wish to work in academia?

A3. Career plan after completing a doctoral program doesn't matter. Among NEXT Student Fellow, there are now some students who wish to work in academia. Students having several career plans gather, and you can get the different idea/thinking. This will make you grow.

Your top priority is to promote your own research and make achievements regardless of career plans. In addition, the transferable skill is a skill which all students must acquire.

Q4. The duration as a Student Fellow is only 3 years, isn't it?

A4. In case of NEXT Student Fellow, the duration is 3 years which is a standard period of study for those in the doctoral program (equivalent) including a four-year doctoral program.

Q5. I enrolled at a university in September 2022. Am I eligible to apply for this program this time?

A5. Those who entered a university in September 2022 can apply. However, the duration as a student fellow will be 2.5 years (April 2023 ~ September 2025).

Q6. Are those in English-based program eligible to apply for this program?

A6. They can apply. However, programs such as improving the research capabilities and career path development support will be held in Japanese only in many cases. They have limited programs to attend and support.

Q7. Can international students receiving the tuition fee exemption based on "Ritsumeikan University Tuition Reduction Scholarship for International Students" apply for this program?

A7. They can apply because there is no restriction to receive other scholarship jointly.

Q8. If I'm selected as a NEXT Student Fellow, can I use any scholarship/grant programs offered by the Graduate Student Career Path Support Center?

A8. You can receive them jointly. For details, please check the application guidelines for each program.

Q9. If I'm selected as a Student Fellow, can I work as a RA?

A9. You can work as a Research Assistant (administrated by the Research Office), but you cannot work as an Educational Research Assistant (administrated by the Division of Academic Affairs).

Q10. 【For Supervising Advisors】 Is it possible to recommend several students among those whom I supervise?

A10. It is possible. There is no limit to the number of students to be recommended.

AY2023 Application Guidelines for RARA Student Fellow

Ritsumeikan Advanced Research Academy Support for Pioneering Research Initiated by the Next Generation - RARA SPRING - (For the second call of application)

1. Objectives of RARA Student Fellow and RARA SPRING

Ritsumeikan University aims to establish itself as a next-generation research university that proposes new social symbiotic values that will prevail in the global society in 2030 (from the “Academy Vision R2030: Ritsumeikan University Challenge Design”). A core concept for the realization of this vision is the “Ritsumeikan Knowledge Nodes (RKN),” which aims to create new research fields that will contribute to the future society. Building sustainable partnerships with universities and research institutions overseas, and playing a role of significant and unique knowledge nodes in such international networks, the University strives to develop world-class research and education.

As a concrete measure, the Ritsumeikan Advanced Research Academy (hereinafter “RARA”) was established to fundamentally enhance the research environment according to the career paths of researchers, from early-career researchers including graduate students to core researchers who lead the University. This program is to select and recognize outstanding doctoral students who are supervised by our core researchers as RARA Student Fellows, and provide support for their competence development.

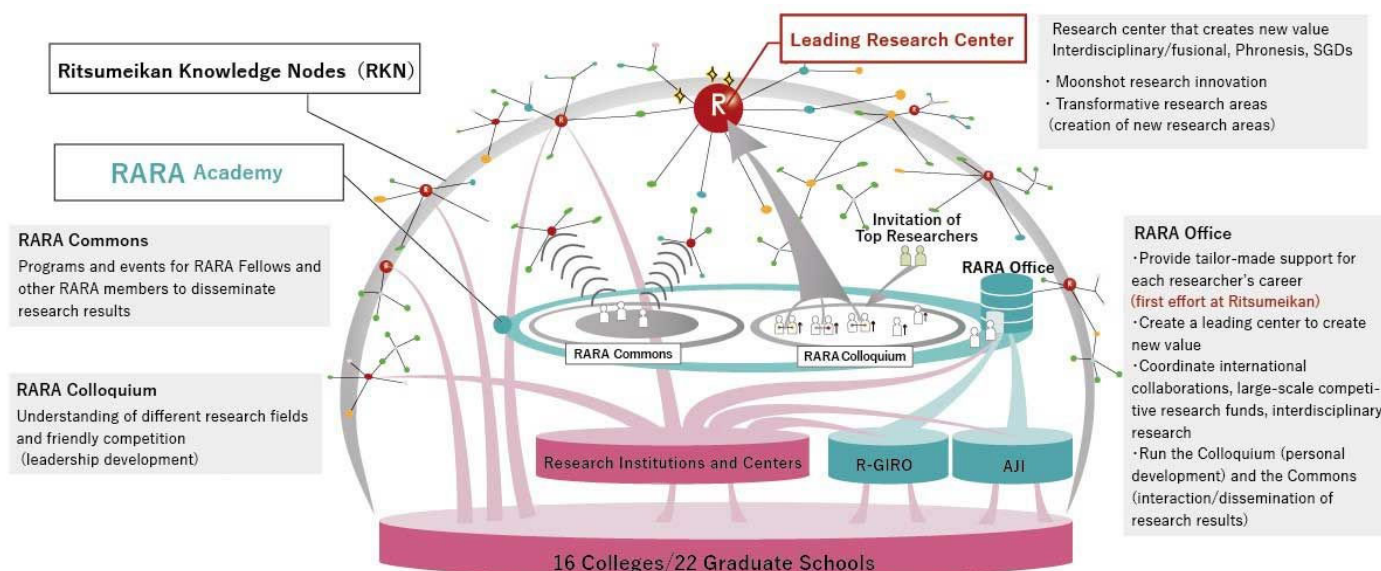
Doctoral students selected as RARA Student Fellows will participate in the RARA with their highly qualified supervisors, improve their individual research competences, and interact with domestic and international researchers in different fields. Through such experiences, they are expected to acquire international and multidisciplinary senses and multifaceted perspectives to become PhD holders who are equipped with the qualities and abilities to play an active role in the international community.

This program was adopted by the “Support for Pioneering Research Initiated by the Next Generation” of the Japan Science and Technology Agency (JST), and has been under implementation since AY2021.

2. What is Ritsumeikan Advanced Research Academy (RARA)?

The Ritsumeikan Advanced Research Academy (RARA) is a group of core researchers who are expected to take a leadership role in realizing the RKN vision and creating a leading and advanced research center at the University. The researchers gathering at the RARA will become the nucleus of the University and involve other researchers in the promotion of advanced research.

The RARA consists mainly of “RARA Fellows” who are core researchers leading advanced research at the University, “RARA Associate Fellows” who are building up their track record to become core researchers, and “RARA Student Fellows” who are expected to become active researchers of the next generation.

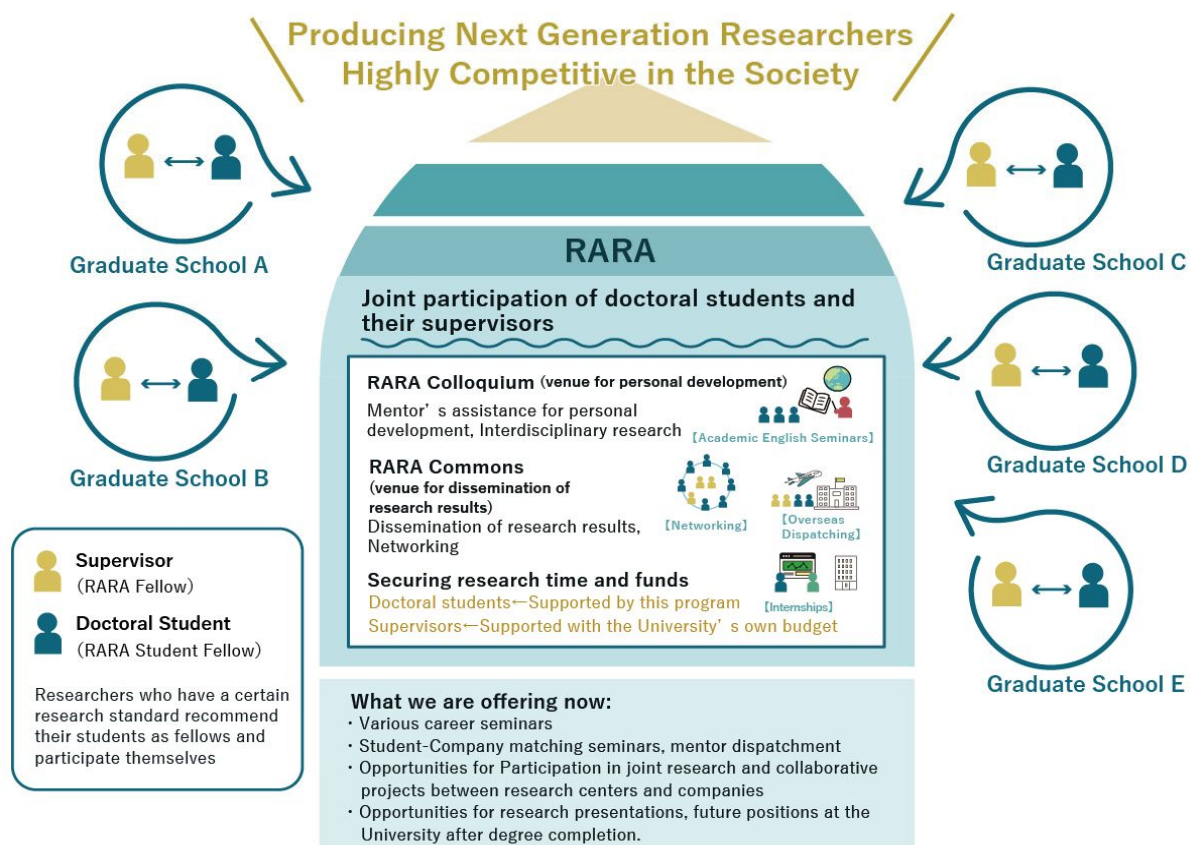


3. Philosophy of RARA

The Ritsumeikan Advanced Research Academy (RARA) aims to create a leading interdisciplinary research hub that generates new value, disseminates its research results, and contributes to the resolution of social issues.

The objective of the RARA is to establish a tailor-made research environment suited to the careers and goals of individual researchers, serve as a foundation for the revitalization of the Ritsumeikan Knowledge Nodes (RKN). As a pulling force of research at Ritsumeikan University, the RARA fosters advanced research that takes on a challenge on original research to open up new academic fields.

Ritsumeikan Advanced Research Academy (RARA) Support for Pioneering Research Initiated by the Next Generation



4. RARA Student Fellow to be Recruited This Time

The RARA Office provides tailor-made support for researchers participating in the RARA. In addition to securing research time and improving the research environment, we support the development of management skills (leadership) to conceive, plan, and lead research projects by providing opportunities for exchange and study with researchers in different fields (RARA Colloquium).

As a member of the RARA, RARA Student Fellows are provided with opportunities to develop their competencies required for early-career researchers who will bear the future. For instance, RARA Student Fellows are provided with opportunities to participate in seminars to acquire knowledge and information required for a researcher and an opportunity to engage in friendly competition through interaction and collaboration with other doctoral students and researchers outside their own research field (RARA Colloquium). The RARA Commons, an opportunity to disseminate research results, is also held for RARA Student Fellows to actively present their research results in order to improve their presentation skills and to build networks with internal and external researchers and people from companies. At the same time, the RARA Office, the promotion office of this program, will assign a Research Coordinator to RARA Student Fellows and provide them with appropriate guidance and

advice to help them realize and relish their own growth.

Doctoral students selected as RARA Student Fellows will be provided with a monthly research fellowship of 180,000 yen (equivalent to annual living expenses of 2,160,000 yen) and an annual research grant of 340,000 yen as support for research activities from the University based on their research plan.

This program is based on the concept of participating in the RARA together with RARA Fellows (supervisors) who hold high research competences. In order to take advantage of the diversity of the University and to create synergy through exchanges between researchers in different fields, however, we will also accept applications from a wide range of graduate students who are not to be supervised by RARA Fellows or RARA Associate Fellows. Having said that, all applicants must perceive the purpose and objectives of the RARA and RARA Student Fellows when applying.

5. Details of application

Name of program	RARA Student Fellow
Number of positions to be made available	(Second Call) Approximately 8 positions* *Of which, a couple of positions will not become available until October 2023 due to the constraints of the quota.
Appointment period	The support will be provided from April 2023 until the end of the standard period of degree completion. (E.g.) For D1 students in AY2023: April 1, 2023-March 31, 2026
Eligibility	<p>One of the following conditions (1), (2), (3), or (4) must be met. <u>However, Japanese Government (Monbukagakusho: MEXT) Scholarship recipients, Foreign Government Scholarship recipients, Japan Society for the Promotion of Science (JSPS) Research Fellow, recipients of scholarships that do not permit dual reception, and those who are recognized as earning a stable income at a level sufficient to cover living expenses (based on the annual income of 2.4 million yen) shall be excluded. If you have any questions about the ineligible conditions, please contact the RARA Office in advance.</u></p> <p>(1) Those who have passed the entrance examination for the doctoral course for admission in AY2023</p> <p>(2) Those enrolled in a Graduate School in September 2022 which is eligible for the program</p> <p>(3) Those who will be in the third year of an integrated doctoral course of the University in the spring semester of AY2023 *Those who are taking Preliminary Project Exercise III as at the time of application (for April enrollees), or those who have earned credits of Preliminary Project Exercise III by the time of application (for September enrollees). <For details, please contact the Administrative Office, Inter-Faculty Graduate Schools at Kinugasa Campus.></p> <p>(4) Those who will be in the first year of a four-year doctoral course of the University in AY2023</p> <p>*In the event that a student is selected as RARA Student Fellow but is unable to satisfy the requirements above as of April 1, 2023, his/her RARA Student Fellow status shall be revoked.</p>

Obligations	(i) Engage in research activities with awareness and responsibility as RARA Student Fellow. (ii) Participate in and make presentation at programs, seminars, etc. organized or designated by the Division of Research, including RARA Colloquium and RARA Commons. (iii) Submit the documents specified separately by the deadlines. (iv) Maintain high ethical standards in accordance with the Ritsumeikan University Research Ethics Guidelines, engage in research activities, and refrain from committing misconduct. (v) Properly execute research expenses in accordance with the “Ritsumeikan University Regulations on the Management of Public Research Funds.” (vi) Have meeting with a Research Coordinator. (*To be conducted every year during the appointment period) (vii) Undergo an extension review (to be conducted by the Division of Research) at the end of the academic year. (viii) Complete the course within the standard period of degree completion.
Support and Research Funds*1	(i) Research fellowship: 180,000 yen per month (2,160,000 yen per year) (taxable)*2 (ii) Research grant: 340,000 yen per year (maximum amount)*3
Other	Be a role model for other students and be proactively involved in providing learning and research support to other students.

*1 The support period for those admitted in September will be until the expiration of the standard period of degree completion (September).

The support period for those adopted in October will be until the expiration of the standard period of degree completion for the relevant students. The maximum annual amount of the research fellowship and research grant for the first year of the program is up to 1,080,000 yen and 170,000 yen, respectively.

If the applicant is unable to enter Japan due to restrictions on entry into Japan imposed by the Japanese government, etc., the fellowship and research grant cannot be provided.

*2 The fellowship shall be provided every other month in odd-numbered months (i.e. May, July, September, November, January, and March).

*3 Reimbursement of actual expenses shall be made with receipts, invoices, etc.

6. Application and screening schedule

[Second Call]

Application period: Between Monday, January 23 and Monday, February 27, 2023

Announcement of screening result: Thursday, March 16, 2023 *To be notified to the applicant (via email)

7. Application documents

(1) Application Form (Form 1)

*Please attach the research achievement report to the Application Form (Form 1) as one PDF file.

For those from Ritsumeikan University, please prepare the report in the prescribed format provided in “Ri-SEARCH (Ritsumeikan University Young Researchers’ Academic and Career Information Search System)”; for those from other universities, please prepare the report in free format.

(2) Self-promotion Video (free format)

Please create a video up to three minutes in length (any recording method) that includes the following information

(i) Outline of your research and research plan (significance and positioning of your research, what you will actually do, and your three-year plan)

(ii) Your career vision and plans/activities to realize it

[Points to note]

*Please endeavor to communicate attraction of your research and demonstrate your devotion as Student Fellow.

*Ensure that your face is clearly visible while presenting the material.

*Recording methods are optional; please devise a method most suited to you such as recording via Zoom or recording a slide show in PowerPoint.

*The total data size, including (1) Application Form and (3) Letter of Recommendation from your supervisor, shall be no more than 100MB.

*Video format must be mp4.

*Please be sure to check the audio and screen operation from the beginning to end before submission.

*mov format cannot be accepted since it may not be playable.

(3) Letter of Recommendation from your supervisor (Form 2)

Ask the prospective supervisor for your doctoral course (equivalent) to provide a Letter of Recommendation.

*For details, refer to the “Application Checklist” and make sure to prepare the documents correctly.

*Application documents and other materials will be used for screening purposes only. Submitted materials will not be returned.

*Personal information obtained from application documents will be used only for the purpose of screening.

8. Submission method/deadline

(1) Submission method (In order to submit, you must first create an account.)

(i) Step 1

Please create an account at the following URL.

*If you already have an account through the enrollment procedures, etc., please proceed directly to Step 2 below.

URL: <https://rw.ritsumei.ac.jp/survey/guest/SVA4FD0.html?key=LNG20220713114743171849486>

(ii) Step 2

With your valid account, please click the “Select here to apply” button and you will be redirected to the submission page for your application.

Please fill out the form and upload your application data [(1) Application Form (in PDF), (2) Self-promotion Video, and (3) Letter of Recommendation from your supervisor (in PDF)] to the designated attachment box to submit.

(2) Submission deadline

Second Call: Monday, February 27, 2023 at 5pm

9. Screening

(1) Procedures

The Screening Committee will be established within the University to review and select the fellows. The committee will be chaired by the Executive Director of the Graduate Student Career Path Support Center and vice-chaired by the Program Manager of the RARA Student Fellow Program, and will be composed of the Dean and the Associate Dean of the Division of Research as well as internal and external experts appointed by the Chairperson. The committee will conduct a documentary screening based on the evaluation criteria. The acceptance will be determined based on the results of the review by the Screening Committee.

(2) Evaluation criteria

- (i) Reasons and purposes of the application for RARA Student Fellow (enthusiasm)
- (ii) The relevant student's own ability to conduct research based on the research activities to date.
- (iii) Appropriateness and future growth potential of the research plan, and a prospect of obtaining a degree within the standard period of degree completion
- (iv) The relevant student's future goals and their conformance with the objectives of the program

10. Others

- (i) You can also apply for the NEXT Student Fellow Program, which invites applications at the same time.
- (ii) Those who are currently applying for "JSPS Research Fellowship for Young Scientists" are also eligible to apply, but must choose one of the programs if they are selected for the fellowship program.
- (iii) If you applied for the first round but were not accepted, you may apply again for the second round.

[Contact]

Attn: PIC of RARA Student Fellow at the RARA Office

Email: rara@st.ritsumei.ac.jp

Tel: 075-813-8199

RARA Student Fellow (RARA-SPRING)
FAQ

Q1. I was unsuccessful at the first call of application. Can I apply again for the second call?

A1. Yes, you can.

Q2. Even though I am not being supervised by a RARA Fellow, can I still apply for the Ritsumeikan Advanced Research Academy Support for Pioneering Research Initiated by the Next Generation (RARA Student Fellow)?

A2. Yes, you can apply. We accept applications from a wide range of doctoral students, including those who are not to be supervised by RARA Fellows.

Q3. Do I need to obtain a recommendation from my supervisor to apply?

A3. Yes, you do. Doctoral students need to obtain a recommendation from their supervisor. In this program, RARA Student Fellows are aimed to improve individual research competences and to develop into a PhD holder equipped with the qualities and abilities to play an active role in the international community. Accordingly, RARA Student Fellows are obligated to participate in programs embedded in the RARA Colloquium and conduct seminars at affiliated schools, etc. as part of the dissemination of research achievements. As the doctoral students are required to fulfill their responsibilities as RARA Student Fellows while conducting their own research activities, their supervisors are requested to give them a recommendation and approval for their participation in this program in advance. However, if you are unable to prepare a Letter of Recommendation from your supervisor, please consult with the RARA Office.

Q4. The eligibility states that “those who are already receiving support from another program or who are recognized as earning a stable income at a level sufficient to cover living expenses from the University, a private enterprise, etc. are excluded.” Which specific programs are regarded as such?

A4. From the viewpoint of providing fair support to as many doctoral students as possible, those who are receiving support from the programs listed in the examples are not eligible for this program. If you are not sure whether or not the support you are receiving affects your eligibility for this program, please contact the RARA Office before applying.

Q5. I am currently working as a research assistant (RA). Can I still apply for this program?

A5. You can apply for this program even if you are working as a research assistant (RA) under the jurisdiction of the Division of Research. Please confirm in advance, however, that you are not receiving support from any of the programs listed in the “Eligibility” section. The RAs under the jurisdiction of the Division of Academic Affairs are not eligible to apply.

Q6. Are those who are to enroll at the University in September 2023 eligible to apply for this program?

A6. They are not eligible for the program for AY2023.

Q7. Is it possible for international students who are receiving tuition fee reduction or exemption under the “Ritsumeikan University Regulations on the Tuition Fee Reduction and Exemption for International Students” to apply?

A7. Yes, it is possible to apply.

Q8. Is it possible to apply if I am on a leave of absence for AY2022 but plan to come back as a D1 student in April 2023, or if I am not registered for AY2022 but plan to enroll as a D1 student afresh in April 2023?

A8. For the former, you are eligible in the case that you were on a leave of absence for the entirety of the application periods for AY2022 (from September 27 to October 13, 2021; from January 28 to February 16, 2022; and from February 21 to March 11, 2022). As for the latter, you are eligible.

Q9. If a RARA Student Fellow takes a leave of absence, how will the research fellowship and research grant be handled?

A9. When a RARA Student Fellow takes a leave of absence, the research fellowship, etc. will be suspended for the semester in which the leave of absence occurs. The period of suspension will not be included in the stipend period, but if the total period of leave of absence exceeds one year, the period exceeding one year will be included in the stipend period. In addition, the research grant cannot be executed during the period of leave of absence.

Q10. What kind of cooperation would be required as a recipient of the Support for Pioneering Research Initiated by the Next Generation (SPRING) of JST?

A10. Graduate students who have been selected as RARA Student Fellows are required to cooperate with the following activities by the Japan Science and Technology Agency (JST). The details will be notified to the successful applicants.

(i) Participation in doctoral student networking events

This is a cross-university exchange event for doctoral students participating in the SPRING, where they can interact with fellow students from other universities to promote mutual inspiration and networking among them.

(ii) Student monitoring survey

JST will directly follow up with the supported students so that they can ensure access to them, directly receive their opinions, etc., and utilize the results straight away in the evaluation of each doctoral student support project.

(iii) Evaluation and follow-up of fostering effects of the program

We will conduct follow-up surveys on the subsequent careers of the graduates for more than 10 years and provide the information to JST.

Q11. [For Supervisors] Can I recommend multiple students whom I supervise?

A11. Yes, you can. There is no limit on the number of students who can be recommended by a supervisor.