

1. Research outline diagram

Outline your research proposal using graphs, charts and colors which are easy to identify in the box below.

Research Subject : The Impact of the US-China Trade War on the High-tech Industry in China and the US

Research Background



·Trade friction between the US and China has intensified since the US reopened Section 301 against China in 2018. As the trade war deepened, some scholars stated that a new point of conflict between the two countries - high-tech industries - came into focus.

Research on the impact on the technology sector in China and the US due to the trade war

·Only relied on theoretical research



·Not enough data and models to support



·Research is not holistic enough



Research Plan

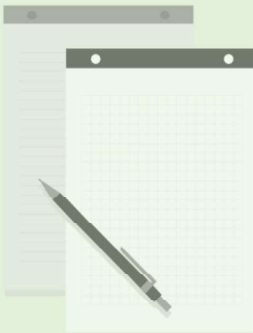
Research objectives:

The aim is to examine the specific impact on the US and China's overall tech sector in the trade war utilizing data analysis.

Research methods:

Interdisciplinary approach: conjunction with economics and international relations. Data will be analyzed through economic theory; strategies for international foreign trade policy will be discussed based on the results in conjunction with international relations theory.

Research contents:



1 Analysis of Industry Impact Using the Static GTAP Model
This step will use data and models from the GTAP database to directly analyze the impact of the trade war on high-tech industries in the US and China. (1. Changes in domestic prices and output of high-tech products in the US and China in the context of the trade war; 2. Changes in import prices and the structure of import sources of high-tech products in the US and China in the context of the trade war)

2 Analysis of Future Impacts Using the GTAP-Dyn Model
In this step, the GTAP-Dyn model will be used to forecast future trends (Forecasts of changes in domestic prices and output of high-tech products in the US and China in the next 5-10 years).

3 If the GTAP-Dyn Model is unduly difficult to simulate, econometrics will be used for forecasting high-tech industry trends for the next 5 to 10 years.

Research's feature and creative points:



· Provide a more accurate analysis based on 2018-2022 data.

· Study uses the GTAP model as a tool, which is a global general equilibrium model that is very useful in analyzing the impact of changes in trade tariffs.

· The data and the use of models in the study can also provide sources and new ideas for subsequent researchers.

· The GTAP model applies to a variety of tariffs. Hope to provide new research tools to scholars in related fields.