



Ritsumeikan CO-OP Membership Guide



Cafeterias

Stores

BookStores

TravelerServices

Insurance

RealEstateOffice

Beyond Borders

Welcome to Ritsumeikan University!

Ritsumeikan CO-OP would like to support your studies and daily life in Japan!

On campus, we have stores, cafeterias, and bookstores that provide many goods and services for you.

Most students and many teaching staff/administrators join our CO-OP.

The entry price is based on member investment, so we hope you will take the time to become a member of this system. In order to join, a refundable deposit for CO-OP shares is requested.

(10 shares at 5,000 yen). Deposits will be fully returned, when you leave university.

立命館生協は日本でのみなさんの研究や日々の生活をサポートします！

98%の学生と多くの教職員が当生協に加入しています。事業は組合員の出資を基盤としております。是非この機会にご加入ください。

加入には生協への出資金が必要です。(10口 5,000円) 出資金は卒業時に返還いたします。



Cafeterias



Stores



BookStores



TravelerServices



Insurance



RealEstateOffice



Beyond Borders

PLEASE PRESENT YOUR MEMBERSHIP CARD AT CO-OP STORES



You can receive your membership card at the co-op office about 3–4 weeks after you join.

MEMBERSHIP BENEFIT

- ◆ Points accumulation by CO-OP Electronic Money
 - 1% points on cafeteria
 - 10% points on books, magazines, comic books.
- ◆ 100yen breakfast “only by Electric Money payment”
- ◆ You can apply for CO-OP “Students Comprehensive Mutual Insurance” and “Personal Liability Insurance for Students”

Please show your CO-OP Membership Card at the cashier.
Without showing your CO-OP Membership Card, you can not buy goods or use CO-OP shops and cafeterias by membership price.
(Non-mebership Price: additional charge from 3 yen to 55 yen)



Registration is required for e-money payment

【E-money Registration flow】

①Apply for membership at the co-op office



About 3-4 weeks later

②Pick up your card at the co-op office



You cannot make payments with electronic money without registration!



After receiving your membership card, please register to start electronic money payment. *

③Registration for e-money payment.

*We will inform you details when you pick up your card.



Student Comprehensive Mutual Insurance

*Please apply with the membership of Ritsumeikan CO-OP!

Student Comprehensive Mutual Insurance (G500 Course)



System of mutual help to prepare the student to deal with injury and illness.
*It isn't National Health Insurance.

Personal Liability Insurance for Students(19H)

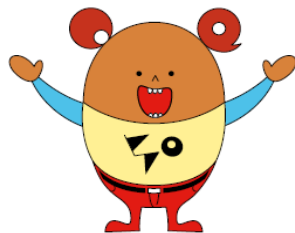


Personal liability insurance to cover personal injury or property damage you cause to other people.
*Includes out-of-court settlement mediation services. (Limited to within Japan)

Personal Liability Insurance for Students + Special clause for persons living alone(19HK)



Personal Liability Insurance for Students
+
Coverge against risk of living alone.



How to Join The CO-OP

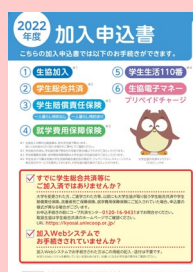
- ① After entering the university, please come to the CO-OP office of each campus.
We will give you **the application documents**.
- ② Please read the CO-OP guide carefully.
And if you are applying for insurance, please fill out the application form in advance.
*Those who only join the co-op do not need to fill out the application form.
- ③ Bring your student ID card, Cash deposit 5,000yen, (if you apply for insurance, also need your application form and insurance premiums) and complete the procedure at the our office.
Please have your email address for e-money registration.



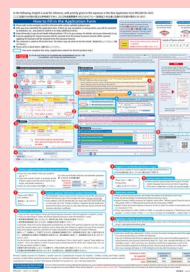
CO-OP Guide



Student Comprehensive Mutual Insurance

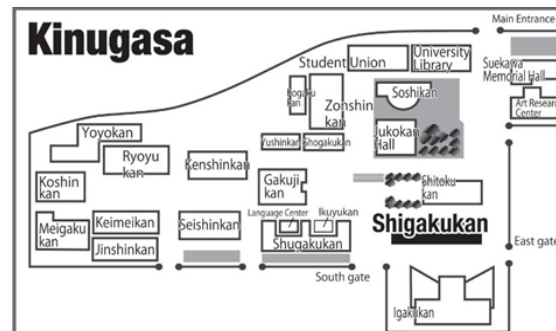


Application Form



Application Form (Entry example)

Office of Ritsumeikan CO-OP



Kinugasa Center

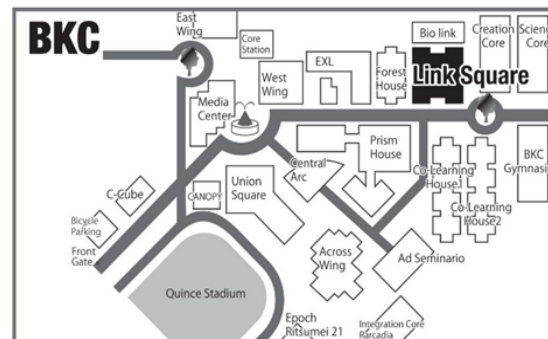
[Shigakukan B1F]

TEL 075-465-8280

[Mon~Fri]

~9/23 Fri. 10:00~15:00

9/26 Mon.~ 10:00~17:00



BKC Center

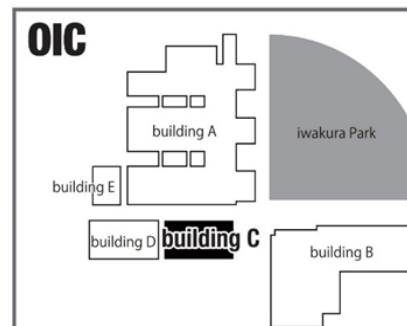
[Link Square]

TEL 077-561-3918

[Mon~Fri]

~9/23 Fri. 11:00~15:00

9/26 Mon.~ 10:15~16:30



OIC Center

[building C / OIC Shop]

TEL 072-645-4103

[Mon~Fri]

~9/23 Fri. 11:00~15:00

9/26 Mon.~ 10:30~16:00

*Sat./Sun./Holiday...closed

*Business hours are subject to change.