

# RITSUMEIKAN UNIVERSITY List of Research Advancement Promotion Programs

The following is a list of research advancement promotion programs to be implemented under the Fourth Mid-Term Plan for Research Advancement (AY2021-AY2025).  
\*For details, please refer to the application guidelines for each program in the relevant academic year.

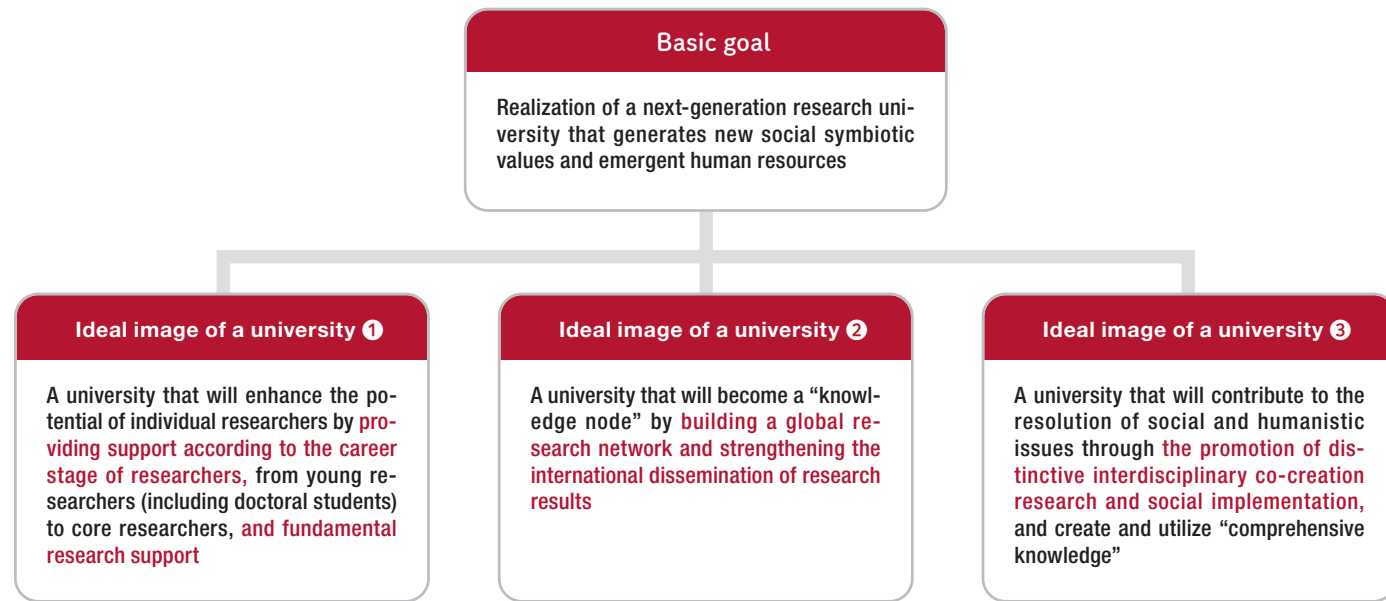
Objective	No.	Program	Purport	Amount of grant	Application period (tentative)	Category
Programs aimed at strengthening research capabilities	1	Ritsumeikan Advanced Research Academy (RARA) Fellow	At the Ritsumeikan Advanced Research Academy (RARA), this program provides tailor-made support to core researchers (RARA Fellows) who will form the leading and advanced research base of the University in order to improve their research environment.	10 million yen (maximum amount per researcher for a single AY)	Closed for new application	Individual
	2	Ritsumeikan Advanced Research Academy (RARA) Associate Fellow	This program provides tailor-made support to researchers (RARA Associate Fellows) who are expected to become the next generation of core researchers (RARA Fellows) in order to improve their research environment.	5 million yen (maximum amount per researcher for a single AY)	Closed for new application	Individual
	3	Research Promotion Program for Acquiring Grants-in-Aid for Scientific Research (KAKENHI)	In order to promote diverse research by individual researchers, this program aims to stimulate research activities of researchers through the application for and acquisition of Grants-in-Aid for Scientific Research (Grants-in-Aid for Scientific Research Fund and Grants-in-Aid for Scientific Research), as well as to enhance research infrastructure support and further increase the acquisition of competitive funds.	200,000-1,000,000 yen	As needed after May	Individual
	4	Research Promotion Program for Acquiring Grants-in-Aid for Scientific Research (KAKENHI) (Grant-in-Aid for Transformative Research Areas (A/B))			May	Individual
	5	Support Program for Female Researchers' International Collaborative Research Activities	As part of efforts to improve the research capabilities of female researchers and to facilitate their promotion to higher positions, this program provides them with full or partial funding for overseas travel and joint research with overseas universities and research institutions. In addition, in order to support those who are responsible for taking care of their families to obtain opportunities for career development without interrupting their research, the program also covers expenses for taking along their children when they travel abroad and for caring for their family members during their absence.	(1) International Collaborative Research Leadership Development Category: Up to 3 million yen/AY (2) International Collaborative Research Startup Category: Up to 1.5 million yen/AY	December	Individual
Programs aimed at strengthening international research capabilities	6	International Collaborative Research Promotion Program	The objectives of this program are to embody the RKN (Ritsumeikan Knowledge Nodes) and increase international recognition by promoting research collaboration with leading overseas universities and the formation of research networks and international collaborative research with overseas researchers.	Global Hub Type Up to 10 million yen/AY (for three years)	Closed for new application	Individual Group
				Collaborative Research Type Up to 4 million yen/AY (for two years)	Closed for new application	
				Startup Type Up to 1 million yen/AY (for one year)	November	
	7	ANU-RU Visiting Researcher's Program	This program supports joint research between researchers from Australian National University (ANU) and the University. Both the "Acceptance Scheme" and the "Dispatch Scheme" are based on the premise of a short stay (up to three months) at the other university.	Acceptance Scheme: Up to 1 million yen in support of research activities Dispatch scheme: TBD in coordination with ANU	February	Individual
	8	Program for Dissemination of Research Results Based on the Cooperative Agreement with Northwestern University	The program aims to publish e-books from Northwestern University Press based on the results of discussions on the Meridian 180, a scholarly exchange platform under the jurisdiction of Northwestern University.	Overall budget cap 5 million yen	May	Individual
	9	Hirai Kaichiro Overseas Researchers Support Grant Program	This program has been established through the generosity of Mrs. Nobuko Hirai, the wife of the late Kaichiro Hirai, founder of Nichicon Corporation (Honorary Guest of the Library, graduated from the College of Law in 1940) and Honorary Guest of the Library, to support and encourage international research activities by overseas researchers using the Hirai Kaichiro Memorial Library, to deepen international mutual cooperation and understanding, and to foster and produce excellent researchers who are expected to be active in international society.	Subsidy: 500,000 yen	January	Individual
10	Support Services for Inviting Overseas Researchers	A new support service has been introduced on a trial basis that can be used when inviting overseas researchers to Japan. The service provides assistance with visa applications for overseas researchers and airport pickup at arrival. For details of the service provided, please refer to the Division of Research website. Service provider: Global Trust Network Co., Ltd.	The University provides support for the service provider's service fees	As needed	Individual	
Programs aimed at promoting social implementation	11	AIST Fusion Program of Seeds/Sprouts	Based on the concept of "industry-academia-government fusion innovation," AIST and Ritsumeikan will jointly establish a research fund with the aim of sprouting the seeds of research held by the two organizations and leading to the creation of industry-academia-government fusion innovation.	Up to 1,000,000 yen/AY from each of the organizations to which both applicants belong	April	Individual
	12	Grassroots Innovation Program (GRIP) (TBD)	Under consideration for program revisions in AY2024			
Programs aimed at forming research centers	13	Program for Research Institute Mission	The important role of an institute is to discover exploratory research based on internal and external research trends and to develop research activities through systematic support. The purpose of this program is to support institutes' efforts to establish and promote priority research projects and to encourage the participation of early-career researchers in them, thereby promoting the relevant institutes' distinctive characteristics and fostering early-career researchers.	Type A 5 million yen (maximum) Type B 10-20 million yen	December	Group
	14	Fourth-Phase R-GIRO Research Program for COE Formation	This program is designed to create a uniquely-Ritsumeikan research center at the Ritsumeikan Global Innovation Research Organization, a research organization under the direct control of the President, on the theme of the challenges of changes in the natural environment and in the population and age structure, and to foster early-career researchers who will lead the next generation.	Approx. 30 million yen per project/AY	Closed for new application	Group
	15	Program for Asia-Japan Research Development	This program is designed to create a research center for resolving various issues in Asia at the Ritsumeikan Asia-Japan Research Organization, a research organization under the direct control of the President, and to foster early-career researchers who will lead the next generation.	Up to 6 million yen per project/AY	Closed for new application	Group
Programs aimed at fostering early-career researchers	16	RARA Student Fellowship Program (RARA x SPRING)	Excellent and highly motivated doctoral students will be provided with a research activity grant (2.22 million yen per year) and a research grant (up to 340,000 yen per year), and will conduct various programs at the RARA to foster "T-type doctoral impact makers." *The program will also provide support for students under the NEXT Student Fellowship Program, which was closed for new application in AY2023.	Research activity grant (2,220,000 yen per year) Research grant (up to 340,000 yen per year)	-	Individual
	17	RARA Student Fellowship Program in the Field of Next-generation AI (RARA x BOOST) (from AY2024 application)	Excellent and highly motivated doctoral students will be provided with a research activity grant (up to 2.22 million yen per year) and research grant (up to 1.68 million yen per year), and, under the RARA Support Unit, they will be fostered as doctoral students who are capable of resolving social issues by making maximum use of next-generation AI technologies.	Research activity grant (2,220,000 yen per year) Research grant (up to 1,680,000 yen per year)	-	Individual

Objective	No.	Program	Purport	Amount of grant	Application period (tentative)	Category	
Programs aimed at fostering early-career researchers	18	RARA Challenging Research Program for Next-generation Researchers with Soaring Ambition (from AY2024 application)	Research grants will be provided to early-career researchers (doctoral students, Senior Researchers, and Researchers) who have valiant and challenging research plans without fear of failure, which can be realized only through the free thinking of early-career researchers, regardless of their field or area of expertise. Simultaneously, the RARA provides early-career researchers with a stable research environment and a place to disseminate their research results, so that they can play an active role as innovators who can revolutionize society.	2,500,000 yen (maximum amount per person for a single AY)	Around June	Individual	
			The purpose of this program is to nurture early-career researchers who can be active in domestic and international educational and research institutions and companies (in research positions), etc., and to foster early-career researchers who have obtained their degrees at the University to develop their research skills in the network of researchers at research centers within the University, to promote their next career postings, and to foster human resources who will be active as core researchers in the future at the University by involving other researchers.	Annual salary of 3,960,000 yen (tax included)	October	Individual	
	19	Early-career Researcher Development Program	This program is designed to actively support the career paths of outstanding Senior Researchers affiliated with Ritsumeikan University who are expected to have potential for future success by continuing their ongoing research activities at the University.	Annual salary of 4,800,000 yen (tax included)	September	Individual	
Programs aimed at disseminating research results	20	Program to Support Female Researchers' Career Path	This program actively supports submissions to high-impact journals.	Proofreading fee (up to 100,000 yen/submission) Submission fee (up to 500,000 yen/submission)	As needed	Individual	
	21	Program to Support the Submission to High-impact Journals	Through a comprehensive agreement between the University and journal publishers, the University has secured free or discounted OA fees and Article Processing Charge (APC) for some journals under the author payment model. Please refer to the Library's website for applicable articles. *The number of APC-free papers is specified in the comprehensive agreement with the relevant journal publishers. For each academic year, the support will be terminated when the quota has been exhausted.	Support for free or discounted fees	As needed	Individual	
	22	Support for the Article Processing Charge (APC)	The purpose of this program is to support outstanding research achievements and early-career researchers in their respective fields, and to promote the international dissemination of research results in English and other foreign languages by providing a grant for publication of academic books.	Up to 1 million yen	November	Individual Group	
	23	Program for the Promotion of Academic Publications	This program provides support for airfares for presentations of research results and international networking at international conferences and meetings held outside of Japan for the purpose of disseminating research internationally.	Up to 100,000 yen	As needed	Individual	
	24	Program for the International Dissemination of Research Results (Program for Overseas Travel Support)	With the aim of promoting the international dissemination of research, this program supports the cost of proofreading and submission required for submission of papers in foreign languages.	Proofreading fee for papers in foreign languages (up to 50,000 yen/submission) Submission fee for journals in foreign languages (up to 50,000 yen/submission)	As needed	Individual	
	25	Program for the International Dissemination of Research Results (Program to Support the Submission of Academic Papers in Foreign Languages)	This program provides support for inviting researchers from overseas when international research exchanges and symposiums are held as a means to facilitate international research exchanges, as well as for the expenses associated with the invitations.	Up to 200,000 yen	As needed	Individual	
	26	Program for the International Dissemination of Research Results (Program to Support Short-term Hosting of Researchers from Overseas)	The program supports the expenses necessary to make the website available in foreign languages for the purpose of international dissemination of research.	Up to 200,000 yen	As needed	Individual	
	27	Program for the International Dissemination of Research Results (Program to Support the Creation of Websites in Foreign Languages)	With the aim of accelerating the creation of research results at the Asia-Japan Research Institute, the program consists of three components: (i) assistance in writing papers in English, (ii) assistance in planning and organizing international research conferences, and (iii) assistance in writing international co-authored papers. While the main focus of the program is to foster early-career researchers at the Ritsumeikan Asia-Japan Research Organization, the program also aims to contribute to the development of next-generation research personnel who belong to other organizations (Colleges, Graduate Schools, and Research Organizations) at the University for the Asia-Japan Research Institute.	Assistance in writing papers in English (up to 200,000 yen) Assistance for planning and organizing international research conferences (Up to 600,000 yen) Assistance in writing international co-authored papers (Up to 400,000 yen)	April	Individual	
	28	AJI Advanced Research Programs	This program subsidizes a portion of the expenses for conferences held at the University that meet the prescribed requirements.	Up to 100,000 yen	As needed	Group	
	29	Assistance in organizing academic conferences (subsidy)	This program exempts the fees for using facilities (excluding cleaning fees) for conferences held at the University that meet the prescribed requirements.	Facility fee exemption	As needed	Group	
Other programs	30	Assistance in organizing academic conferences (exemption from facility fees)	The purpose of this program is to secure time to devote to research or investigation by exempting faculty members from teaching duties during their sabbatical leave period, with the aim of promoting the development and advancement of teaching and academic research at the University.	Up to 3,300,000 yen	June	Individual	
	31	Sabbatical Leave Program for Full-time Teaching Staff		Up to 3,300,000 yen	March	Individual	
	32	Sabbatical Leave Program in the Early-career Scientists and Work-life Balance Categories		Up to 2,000,000 yen	May	Individual	
	33	Sabbatical Leave Program for Assistant Teaching Staff		-	3 months prior to the start date	Individual	
	34	Faculty Research-Priority Program		The purpose of this program is to contribute to the maintenance and improvement of the University's research standards and the advancement of research by subsidizing the routine research activities of individual researchers.	390,000 yen	February	Individual
	35	Individual Research Allowances		This program supports balancing research activities and life events such as childbirth, childcare, and nursing care.	Up to 300,000 yen/semester	July/December	Individual
36	Research Support Staff System						

# Ritsumeikan University's Academy Vision

Ritsumeikan University has formulated the R2030 Academy Vision, a new set of goals for the Academy toward 2030. The Fourth Ritsumeikan University Mid-Term Plan for Research Advancement (AY2021-AY2025) was newly developed in AY2021, with the basic goal of "realizing a next-generation research university that generates new social symbiotic values and emergent human resources." In order to achieve this basic goal, we have positioned three ideal images of a university as the three goals of the Fourth Mid-Term Plan for Research Advancement.

## 1. Fourth Mid-Term Plan for Research Advancement

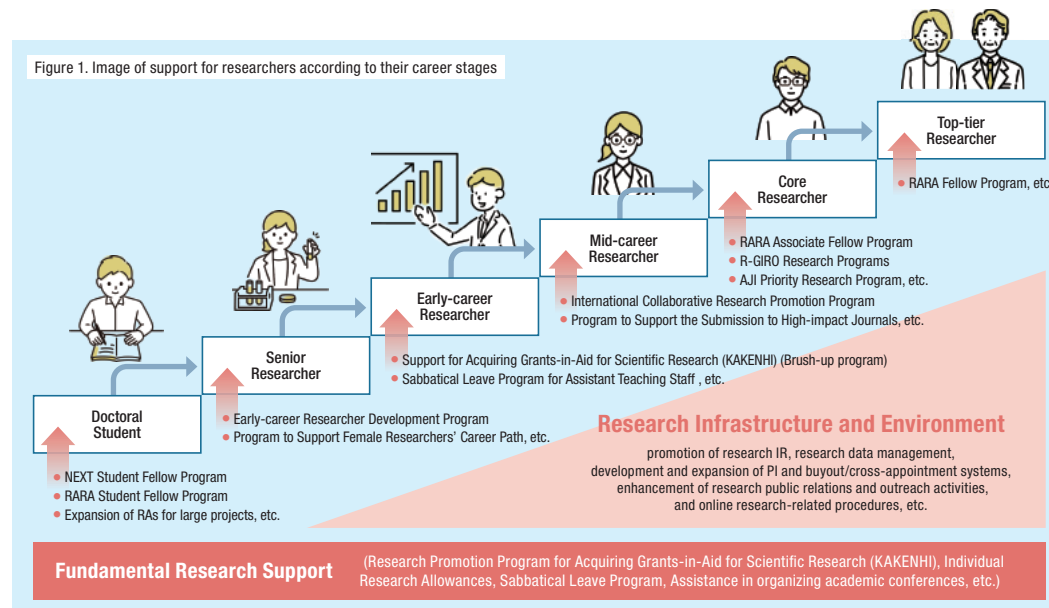


### Three Ideal Images of a University

#### Ideal image of a university ①

A university that will enhance the potential of individual researchers by providing support according to the career stage of researchers, from young researchers (including doctoral students) to core researchers, and fundamental research support

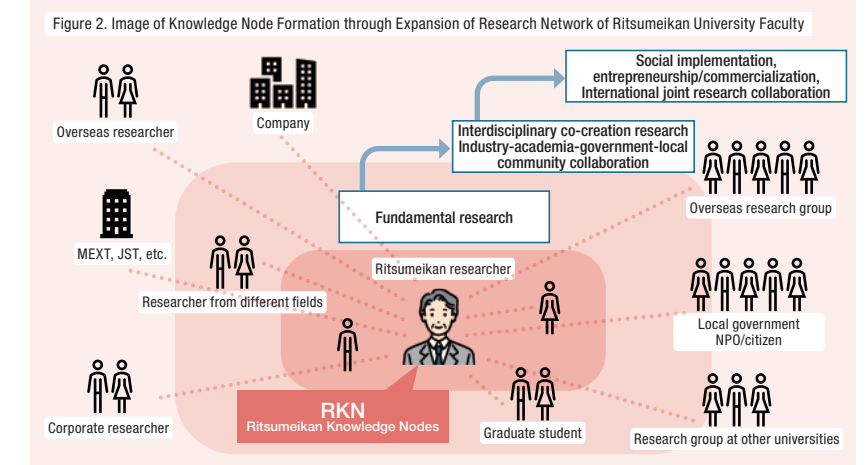
It is to provide career-oriented support to each researcher so that he/she can exhibit his/her individual capabilities to the fullest, thereby enhancing his/her reputation in each field, which in turn will lead to an overall improvement in the comprehensive research capabilities of the University as a whole. (Figure 1)



#### Ideal image of a university ②

A university that will become a "knowledge node" by building a global research network and strengthening the international dissemination of research results

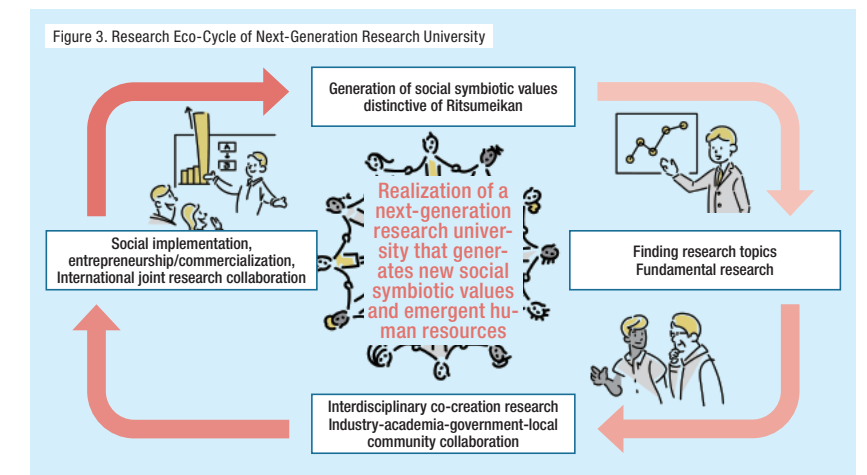
The R2030 Academy Vision proposes the establishment of Ritsumeikan Knowledge Nodes (RKN). It has been ascertained in the RKN that the University will "build a system that enables its Colleges, Graduate Schools, Research Organizations/Institutes, and individual researchers conducting research thereat to realize their research potential to the fullest, while building continuous partnerships expansively through the university-wide visualization of networks with overseas universities/research institutes, international organizations, corporations, NGOs, and researchers in Japan and overseas, and strive to become an important and unique "node of knowledge" in the international network where the cyber and real worlds are interlinked. In order to become a hub of the Ritsumeikan Knowledge Nodes (RKN), Ritsumeikan University is also required to promote the development of research bases that will lead a next-generation research university, and this university-wide task will be undertaken in conjunction with the Mid-Term Plan for Research Advancement. (Figure 2)



#### Ideal image of a university ③

A university that will contribute to the resolution of social and humanistic issues through the promotion of distinctive interdisciplinary co-creation research and social implementation, and create and utilize "comprehensive knowledge"

To resolve social issues by taking advantage of its unique characteristics as a comprehensive university, Ritsumeikan University has been promoting cross-field, bottom-up research that respects the diversity of research and activities that have a social impact, such as research in areas of regional co-creation, formation of research communities involving regional research, and response to the SDGs. In addition, we will provide support to increase the international recognition of outstanding research projects in these areas, and promote cutting-edge research activities at the Ritsumeikan Global Innovation Research Organization (R-GIRO) and the Ritsumeikan Asia-Japan Research Organization, as well as fused research activities to resolve problems that have been led by the Program for Research Institute Mission and the Program for Core-to-Core Research. In this diversity-rich research environment supported by a diverse network, Ritsumeikan University will further promote research advancement in collaboration with the University-led research projects and graduate school advancement measures such as the fostering of early-career researchers. (Figure 3)



## 2. KGIs and KPIs for the first half of the R2030 Academy Vision (AY2021-AY2025)

The degree of achievement of research advancement against the three goals will be monitored and evaluated using the indicators (KGIs and KPIs) defined in the R2030 Academy Vision.

KGI : Key Goal Indicator	KPI : Key Performance Indicator
<ul style="list-style-type: none"> <li>• QS World University Rankings: 301-400th (801-1000th)</li> <li>• THE Impact Rankings: 101-200th (201-300th)</li> <li>• Top-10% international co-authored papers: 160 papers/year (80/year)</li> <li>• Number of adoption for major categories (A or above) of Grants-in-Aid for Scientific Research &lt;KAKENHI&gt;: 10 projects/year (5/year)</li> <li>• Amount of external funds acquired: 5.0 billion yen (3.35 billion yen)</li> </ul>	<ul style="list-style-type: none"> <li>• Number of votes received in the QS Global Academic Survey: 300 votes (86)</li> <li>• Evaluation points for the THE Impact Rankings: 84.0 (75.4)</li> <li>• Number/amount of KAKENHI categories adopted: 790 projects (690)/1.8 billion yen (1.4 billion yen)</li> <li>• Amount of external funds acquired through the industry-academia-government collaborations: 1.1 billion yen (730 million yen)</li> <li>• Numbers of researchers dispatched overseas/received from overseas: 1,334 persons (7)/440 persons (140), respectively</li> <li>• Rate of international co-authorship/number of paper submissions to high-impact journals: 33.3% (29.2%)/200 papers (94)</li> <li>• Number of graduate-student participants in projects of Research Institutes/Research Centers: 300 doctoral students (191), 300 master's course students (192)</li> </ul>

\*Figures in parentheses represent results for AY2020