

manaba+R is changing to
moodle+R



#The next step forward in "Learning"

Since the pandemic, various approaches to learning using various online tools such as manaba+R platform, have been adopted widely. The new learning management system (LMS: Learning Management System) called "moodle+R" will be implemented starting from AY 2026 to adapt the new learning styles.

In AY 2025, manaba+R will continue to operate in parallel with the new moodle+R system.

Some classes will use moodle+R. Please follow the faculty instructions for each class.



Full rollout in AY2026!

moodle+R

manaba+R



What is moodle?

Moodle is a global standard open-source e-learning platform with over 164,000 sites across 240 countries worldwide.

In addition to what has been possible with manaba+R, moodle adds new tools to further expand your learning possibilities!



What is different from manaba+R?

manaba+R class course



Change to moodle+R!

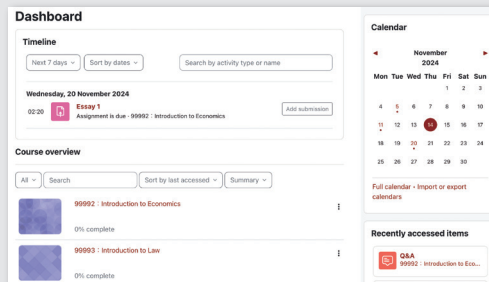
Moodle+R is the specialized tool for class support including quizzes, reports and course content.

The "University Announcements," "Class Cancellation and Make-up Class information," and "Students Pages" that are now published on manaba+R are scheduled to be launched separately as a new portal system, separate from moodle+R.

Distinctive Features of moodle+R

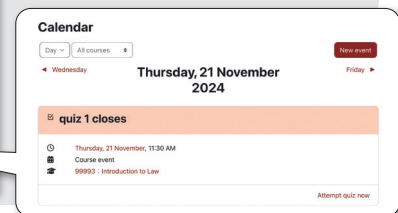
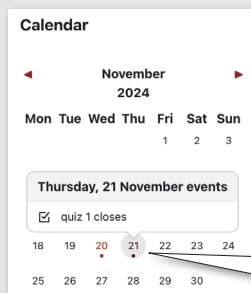
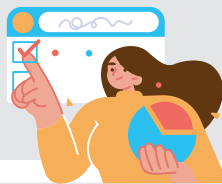
Dashboard (Learning Progress Management)

The timeline displays the deadlines for various assignments and allows you to check your usage and progress of each class you are taking. That makes self-management easier.



Calendar

The schedule management feature is enhanced by displaying quizzes and assignment (report) as well as the event schedule.



Compatibility with multimedia

The range of available media expands, including the submission of various assignments using audio, video, and rich text.

Similarly, we can also expect advanced feedback from faculty using a variety of media.



Compatibility with multiple device types

Moodle+R can be used not only on laptop computers but also devices such as smartphones and tablets. The mobile app is also available.



There are many other tools!

* The screen is under development and may be subject to changes.



Educational DX Taskforce, Division of Academic Affairs, Ritsumeikan University
Manabi Station on your Ritsumeikan University Campus