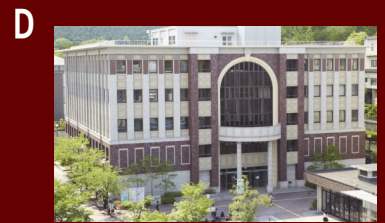
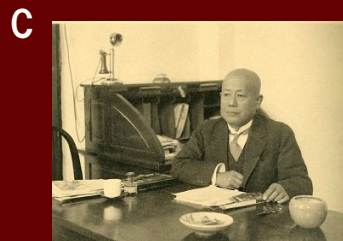
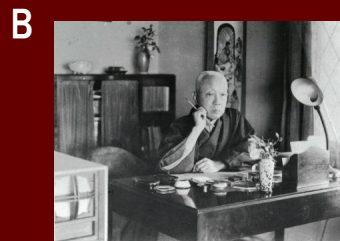


# HIRAI KAICHIRO MEMORIAL LIBRARY QUIZ – ROUND 6

- 【1】The HIRAI KAICHIRO MEMORIAL LIBRARY was opened on April 1, 2016.
- 【2】The HIRAI KAICHIRO MEMORIAL LIBRARY was constructed with donations from Mrs. Nobuko HIRAI.
- 【3】The name of the speech-friendly study space on the 1st floor of the HIRAI KAICHIRO MEMORIAL LIBRARY is called “ぴあら”, which stands for Peer Learning Room.
- 【4】In the memorial room of HIRAI KAICHIRO MEMORIAL LIBRARY, there is a hanging scroll of haiku poems, a valuable collection of HIRAI Kaichiro. It was hand-written by Prince SAIONJI Kinmochi, the founder of Ritsumeikan.
- 【5】Which photo is the HIRAI KAICHIRO MEMORIAL LIBRARY?



- 【6】Mr. HIRAI Kaichiro was born on December 24, 1907.
- 【7】Mr. HIRAI Kaichiro's hometown is Omiya-cho, Kyotango City, Kyoto.
- 【8】Mr. HIRAI Kaichiro graduated from Ritsumeikan University's College of Law (then College of Law and Economics) in 1940.
- 【9】Please select a photo of Mr. Kaichiro Hirai from the following images.



- 【10】What is the appropriate kanji character to fill in the blank in HIRAI Kaichiro's motto?  
「天知る、地知る、( )知る」 「我」 「人」 「己」 「望」