

# AY2025 Ritsumeikan Advanced Research Academy (RARA) Challenging Research Program for Next-generation Researchers with Soaring Ambition - Application Guidelines -

## 1. Objective and purport of the RARA Challenging Research Program for Next-generation Researchers with Soaring Ambition

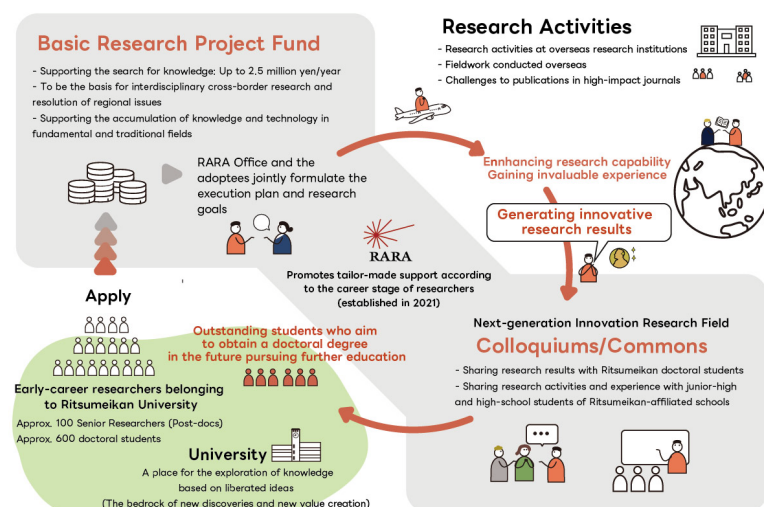
Ritsumeikan University has formulated the “R2030 Academy Vision: Ritsumeikan University Challenge Design,” which describes what the University should be in the 2030s. As a university with research activities and their implementation at its core, Ritsumeikan University has the following two goals: (i) to become a next-generation research university that continues to implement new values into society that lead to resolution of global-scale issues through the enhancement of its research capabilities, and (ii) to foster innovative and emergent human resources capable of implementing the results of its outstanding research into society. As a specific measure to attain these major goals, we have established the Ritsumeikan Advanced Research Academy (hereinafter referred to as “RARA”) and have been working to substantially enhance the research environment by promoting support for individual researchers, from early-career researchers (including graduate students) to core researchers, according to their career path. In the past, the Division of Research has promoted the enhancement of the research environment and support for career paths through various support programs such as the Early-career Researcher Development Program and the RARA Student Fellowship Program for outstanding doctoral students of the University as well as early-career researchers soon after obtaining their doctoral degrees.

In addition to these programs, we are once again accepting applications for the “RARA Challenging Research Program for Next-generation Researchers with Soaring Ambition” to support the challenging research activities of early-career researchers who are to lead the future to create new values.

**This program is open to all doctoral students and Senior Researchers affiliated with Ritsumeikan University, and provides support for their original, challenging, and ambitious research activities, including research grants.**

It is our hope that the adoptees of this program will immerse themselves in research and accumulate experience as a researcher by setting challenging goals for themselves in various ways, such as research activities at overseas research institutions, fieldwork in various parts of the world, and submissions to high-impact journals.

The adoptees will be financially supported by the RARA as a foundation for knowledge exploration activities based on their own liberated ideas by early-career researchers ranging from doctoral students to Senior Researchers, etc. In addition, the research results and experience of this program will be shared with the younger generation (elementary, junior-high, and high-school students of Ritsumeikan-affiliated schools, etc.) as part of the adoptees’ research



outreach activities.

This program will be implemented and operated being funded by Daiichi Sankyo Company, Limited's Support Endowment Program for the Next-generation Researchers with Soaring Ambition (adopted in 2023), which aims to support early-career researchers and contribute to the development of a sustainable society.

It is expected that the program attracts ambitious, challenging, and inspiring research plans from across the University.

## 2. Application details

Support target	<p>Ambitious and challenging research plans based on early-career researchers' liberated ideas without fear of failure</p> <p>*Projects in any research field or research area shall be welcome.</p> <p>*Neither applicability nor practicality shall be requisite for application. (Basic research shall also be welcome.)</p>
Support scale	<p>- Doctoral students (including JSPS DC1 and DC2 Research Fellows) Approximately two projects (up to 2.5 million yen per project)</p> <p>- Senior Researchers, and JSPS PD and RPD Research Fellows Approximately two projects (up to 2.5 million yen per project)</p>
Implementation period	From April 1, 2025 to March 31, 2026
Application eligibility	<p>- Those who are expected to be doctoral students at Ritsumeikan University (doctoral students enrolled at Ritsumeikan University or those who are enrolled in the third year or higher of a four-year or integrated doctoral program), Senior Researchers, or JSPS Research Fellows for Young Scientists (DC1, DC2, PD, or RPD) during the implementation period above.</p> <p>*Applications from those who plan to enter the University's doctoral program in the spring semester of AY2025 and whose entrance examination results are not yet known during the application period described below will also be accepted.</p> <p>*Those who will be enrolled in the fall semester of AY2025 or who are scheduled to expire or complete their tenure in the spring semester of AY2025 shall not be eligible.</p> <p>*For Senior Researchers and JSPS Research Fellows for Young Scientists (PD, RPD), there must be less than eight years elapsed after obtaining their doctoral degrees. However, leave periods due to life events such as prenatal/postnatal leave, childcare leave, etc. shall be excluded.</p> <p>*Those receiving support under this program in AY2024 shall not be eligible.</p>
Eligibility for support	<p>- Those who are doctoral students at Ritsumeikan University (doctoral students enrolled at Ritsumeikan University or those who are enrolled in the third year or higher of a four-year or integrated doctoral program), Senior Researchers, or JSPS Research Fellows for Young Scientists (DC1, DC2, PD, or RPD) during the implementation period above.</p> <p>*Those who are not admitted or appointed to a position at the University as of April 1, 2025, shall lose their eligibility for support from this program.</p>
Obligations	- Prepare a poster (in the prescribed form of the Division of Research) describing relevant

	<p>research results and the details of the efforts.</p> <ul style="list-style-type: none"> <li>- Cooperate in the introduction and presentation of research to students at Ritsumeikan-affiliated schools, etc.</li> <li>- Attend the University's "Compliance Education" and "Research Ethics Education" courses.</li> <li>- Handle research expenses in the same manner as scholarship endowments, and execute them in accordance with the University's regulations. Please check the Research Fund Spending Guidebook in advance.</li> <li>- Indicate that the research was supported by this program when presenting the relevant research results.</li> </ul>
--	--

### 3. Screening

#### (1) Screening Committee

- 1) A screening committee consisting of experts within the University will conduct a screening based on the evaluation items and decide on the acceptance or rejection of applications.
- 2) The adoption results will be reported to the Committee on Research Administration.

#### (2) Evaluation criteria

An overall evaluation will be made after focusing on the following points.

- 1) Is the research plan based on liberated ideas, ambitious and challenging without fear of failure?
- 2) How much significance and ripple effect do the results based on this research project have on academia, science and technology, society, etc.?
- 3) Is a specific plan to carry out the research activities (e.g. goals to be attained, period of time, target areas/fields, and methods) clearly described?
- 4) Does the applicant have the capability of conducting research that provides the basis for proceeding with the stated research plan (e.g. motivation, past research achievements, and social experience)?

### 4. Points to note

- (1) Application forms shall be prepared within the designated numbers of pages, including figures and tables.
- (2) Application forms shall be presented to Screening Committee members in PDF format.
- (3) If, after receiving the application forms, it is confirmed that the relevant applicant does not satisfy the eligibility requirements, the application in question shall not be made subject to screening.
- (4) If an adoptee is to be transferred to another institution, he/she shall not be allowed to continue his/her research activities under this program at the destination institution.

### 5. Filling out the application form

- (1) When an application is made in which research activities are expected to be conducted by more than one research members, the representative person shall coordinate the application and indicate thereof in the research plan section while applying as an individual. However, all members must satisfy the application eligibility above.
- (2) List all scholarships or support programs you are currently receiving without omission.

#### 6. Use of grants

Research expenses shall be executed in accordance with the University's internal regulations. (Please read carefully the University's Research Fund Spending Guidebook when executing research expenses.)

#### 7. Notification of screening results

Applicants will be notified of the screening results in late February 2025 by e-mail. In addition, the adopted plans will be posted on the University website and announced at the Committee on Research Administration.

#### 8. Handling of application forms and personal information

- (1) Application forms, etc. will be used for screening purposes only. Submitted materials shall not be returned.
- (2) Personal information obtained from application forms, etc. will not be used for any purpose other than screening.

#### 9. Application procedures

##### (1) Application period

Between Friday, January 10 and 13:00 on Friday, January 31, 2025

##### (2) Points to note when applying

- Please fill out the prescribed application forms as required when applying.
- Please submit the application form in PDF format.

##### (3) Submission link

<https://rw.ritsumei.ac.jp/survey/guest/SVA4FD0.html?key=LNG20241212180143641916308>

##### (4) Contact Person:

Toshiro Kikuchi (Mr.), RARA Office

Outside line: 075-813-8560 (e-mail: [rara@st.ritsumei.ac.jp](mailto:rara@st.ritsumei.ac.jp) )



Daiichi Sankyo aspires to be a company that “contributes to the health and prosperity of people around the world” through the provision of new therapeutic solutions and optimal modalities by leveraging our greatest strengths in science and technology. In the society where Society 5.0 is envisioned, new innovations brought about by various technological innovations are expected to resolve various issues such as the declining birthrate, aging population, and disparities between rich and poor, and to realize a society where each individual can live in comfort and play an active role. To create these innovations, progress and development of basic research in a wide range of fields, including mathematics, physics, chemistry, biology, medicine, pharmacology, and sociology, is essential. However, Japanese universities (small and medium-sized universities, in particular) and other research institutions are facing a situation where public research funding from the Grants-in-Aid for Scientific Research of the Ministry of Education, Culture, Sports, Science and Technology (MEXT) has been reduced and is now clearly insufficient to support their diverse basic research activities. In light of the situation in which Japanese universities and other research institutions find themselves, it is hoped that we support the development of basic research, which is the source of innovation bringing about social and economic change, through this program, and support the next generation of researchers with soaring ambition who will undertake basic research in Japan.

Toward the realization of this goal, we are launching the Support Endowment Program for the Next-generation Researchers with Soaring Ambition to assist early-career researchers by way of research management organizations at universities and other research institutions. The fields and categories to be covered by this program are not limited to life sciences, but also include mathematics, physics, chemistry, sociology, etc. The program will support the development and improvement of research capabilities of early-career basic researchers at universities and other research institutions in a wide range of sciences, including the enhancement and improvement of university management systems that support such research. It is hoped that innovation will be created through the challenge to diverse ideas by basic researchers who will lead the next generation toward the realization of “health and prosperity of people around the world” in 10 years’, 20 years’, and 100 years’ time, without being shackled by hasty commercialization and social implementation.

As a result of the review by a committee consisting solely of external experts, the recipients of this year’s endowment have been determined as follows. Through this program, it is hoped that innovation will be created through the challenge to diverse ideas by basic researchers who will lead the next generation toward the realization of “health and prosperity of people around the world.”

- High Energy Accelerator Research Organization ●Hokkaido University ●Kanazawa University ●Kochi University
  - Kyoto University ●Nagoya Institute of Technology ●Nara Institute of Science and Technology ●Osaka University
  - Ritsumeikan University ●Shizuoka University ●The University of Electro-Communications
  - The University of Tokyo ●Tohoku University ●Tokyo Medical and Dental University ●University of the Ryukyus
- 15 institutions in total (in alphabetical order)

