

Special Lecture (Soft Wearable Devices and Their Applications) Work sheet

Your Name (&ID) : _____

Your Partner's Name: _____

Q0: Which type of robot do you like? And Why?

Q1: Why do we need soft robots? In what fields are soft robots used?

Find out in what areas soft robots are used! ⇒ <https://robotsguide.com/>

Why do you think we need soft robots?



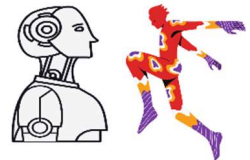
Q2: Why do we need soft sensors?

Let's describe the difference between humans and robots.

Adjective:

Verb:

Describe here the difference.



Why do you think soft sensors are needed in biomedical engineering/Welfare or Medical Robots?

Q3: Why do we need soft actuators? Consider the caregiving scene.

What is required for a robot to act on a person? (Both of Mental & Physical)

Q4: What are the advantages of using soft electrodes? Please imagine a scene of interaction with the robot.

What are the advantages of using soft electrodes? Imagine a scene of interaction with the robot.

What new technologies could be created if robots could know human biological signals?

Q5: Let's think about soft sensors for human motion measurement.

Principles, advantages, and disadvantages of extension sensors.

Principles, advantages, and disadvantages of bending sensors.

Which sensor is better for robotic applications? Please give an example and explain.

Q6: Consider soft actuators that act on people.

Please tell me about soft actuators that improve human conditions. (explain in detail how to use it)

Q7: Free comment from you to me!

